

157 Trees Lost

White Stadium
in Franklin Park

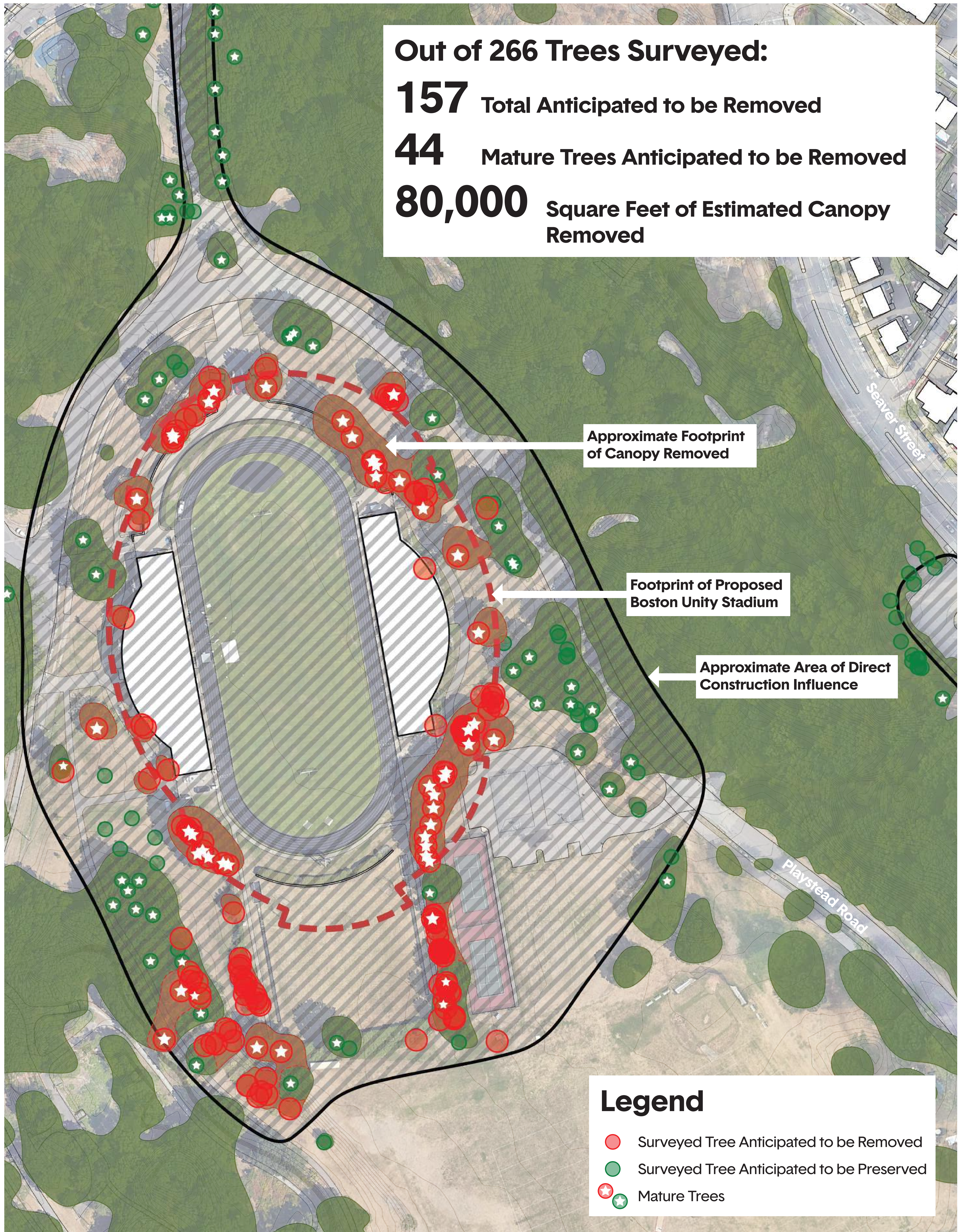
Associated with Proposed White Stadium Expansion

Out of 266 Trees Surveyed:

157 Total Anticipated to be Removed

44 Mature Trees Anticipated to be Removed

80,000 Square Feet of Estimated Canopy Removed



Site Plan

All Tree Locations, Data, and Consideration for Removal Based upon "Tree Preservation Report" Dated May 6, 2024, Prepared by Bartlett Tree Experts for Stantec and Accessed via the City of Boston Records.

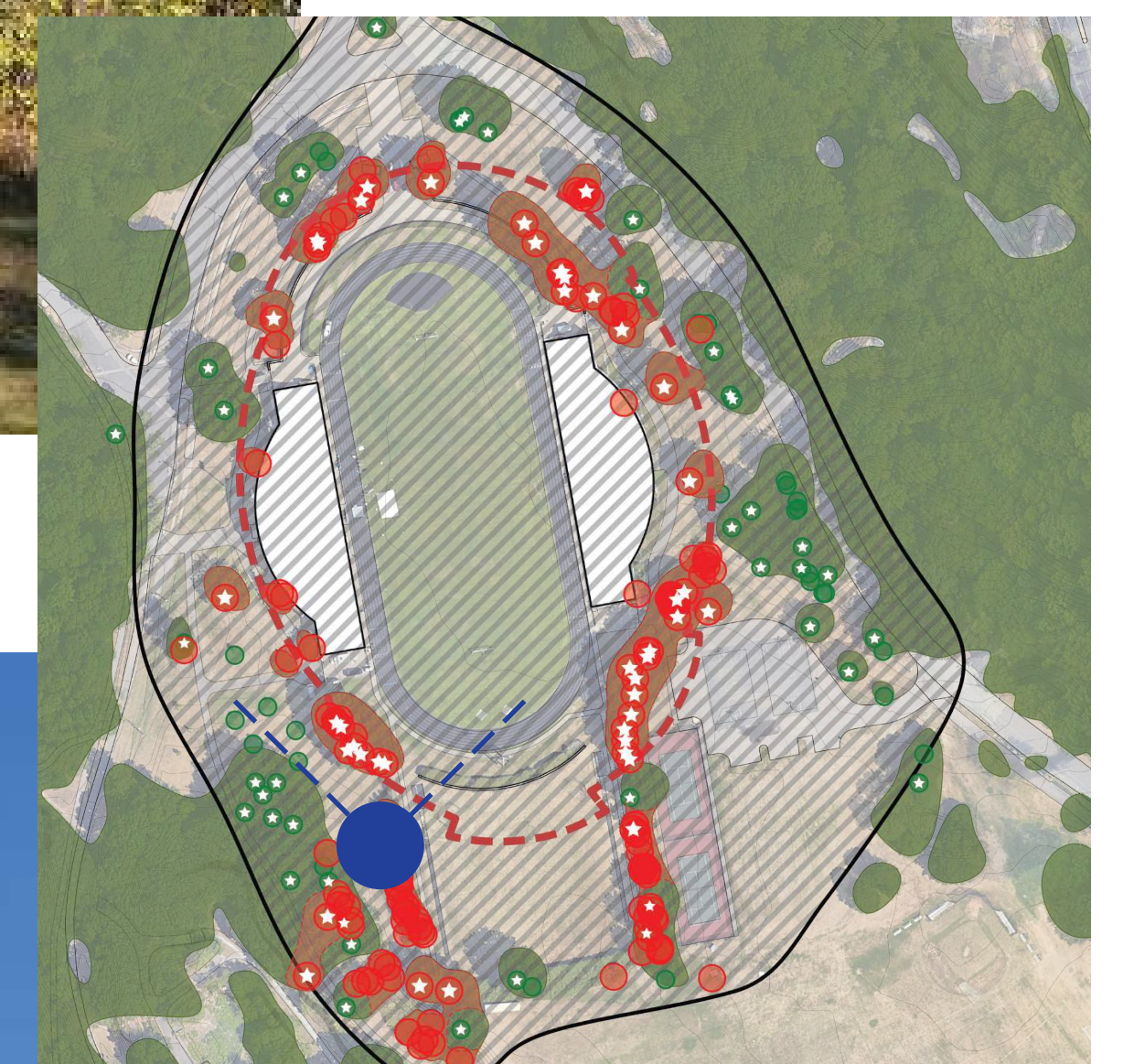
Tree Loss

White Stadium
in Franklin Park

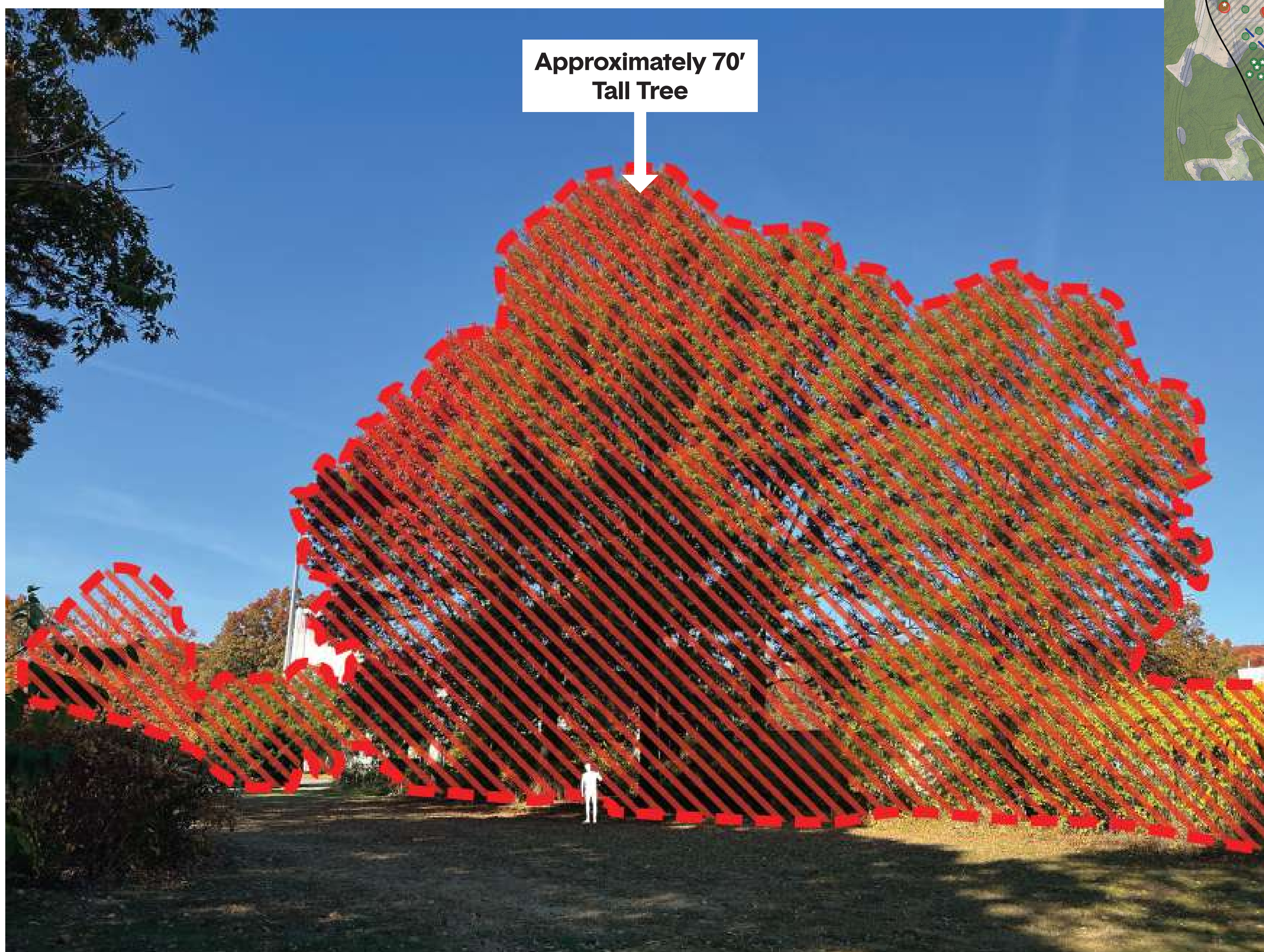
Associated with Proposed White Stadium Expansion



Existing View



Locus Map



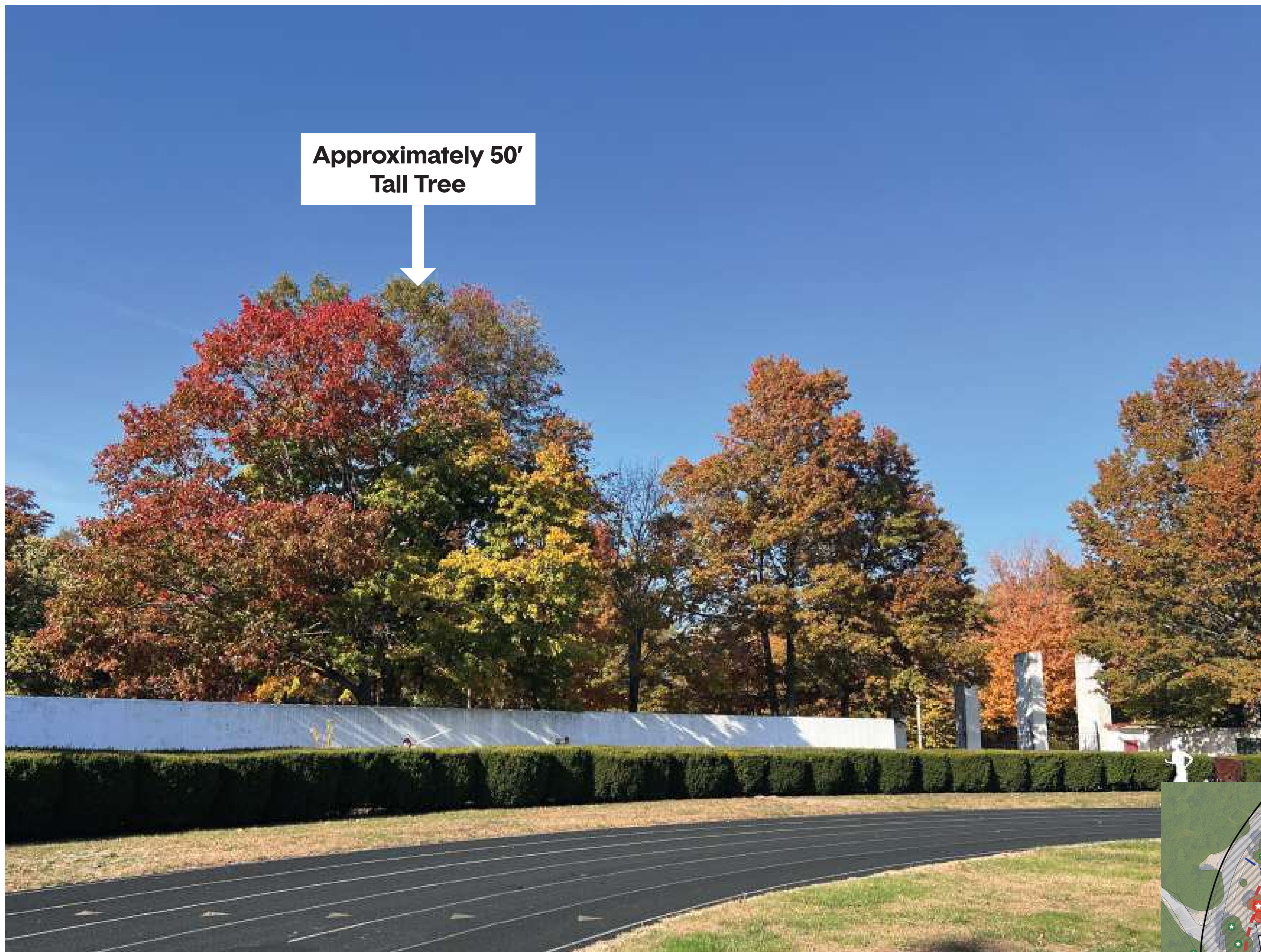
Canopy Anticipated to be Removed

All Tree Locations, Data, and Consideration for Removal Based upon "Tree Preservation Report" Dated May 6, 2024, Prepared by Bartlett Tree Experts for Stantec and Accessed via the City of Boston Records.

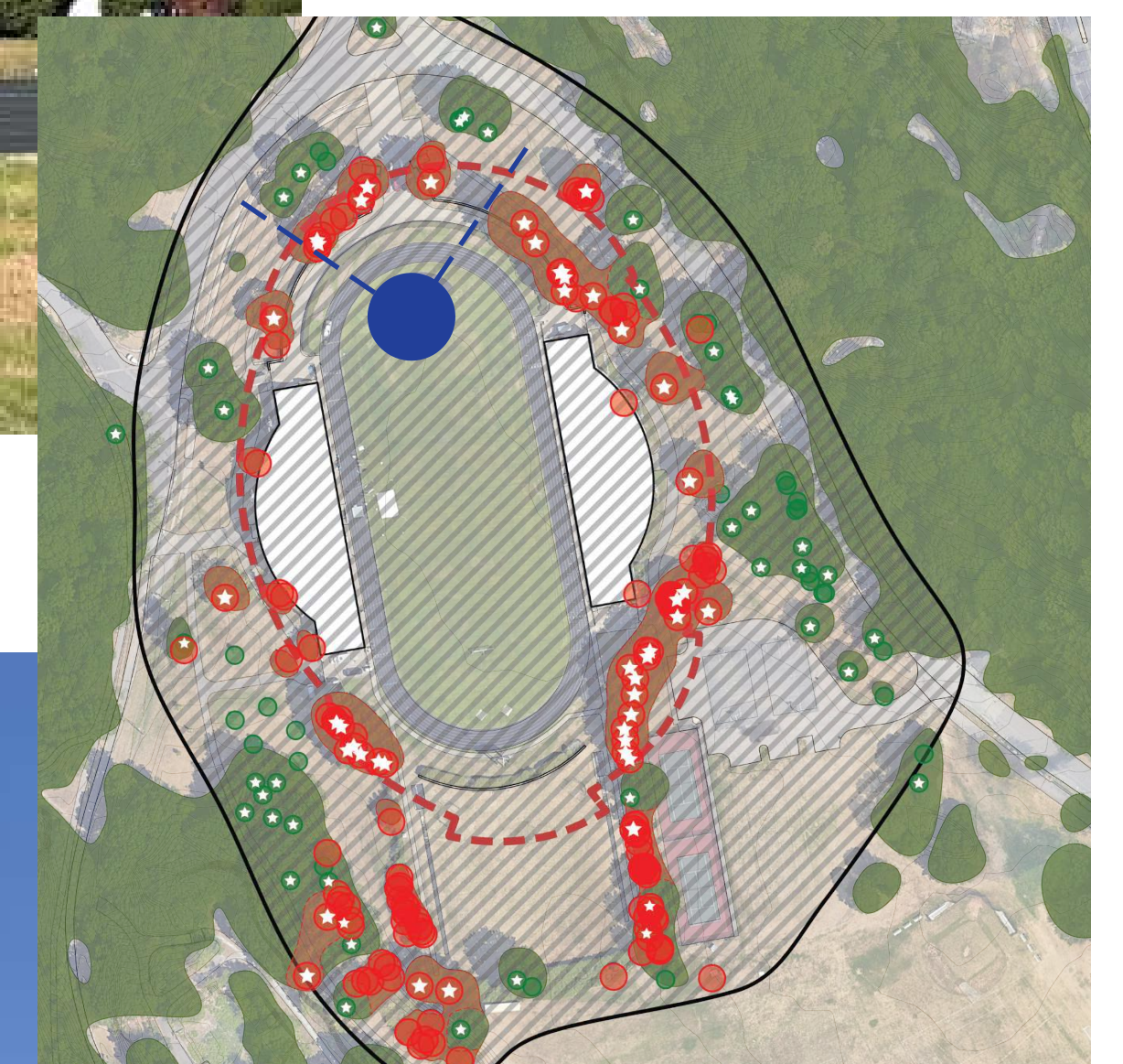
Tree Loss

White Stadium
in Franklin Park

Associated with Proposed White Stadium Expansion



Existing View



Locus Map



Canopy Anticipated to be Removed

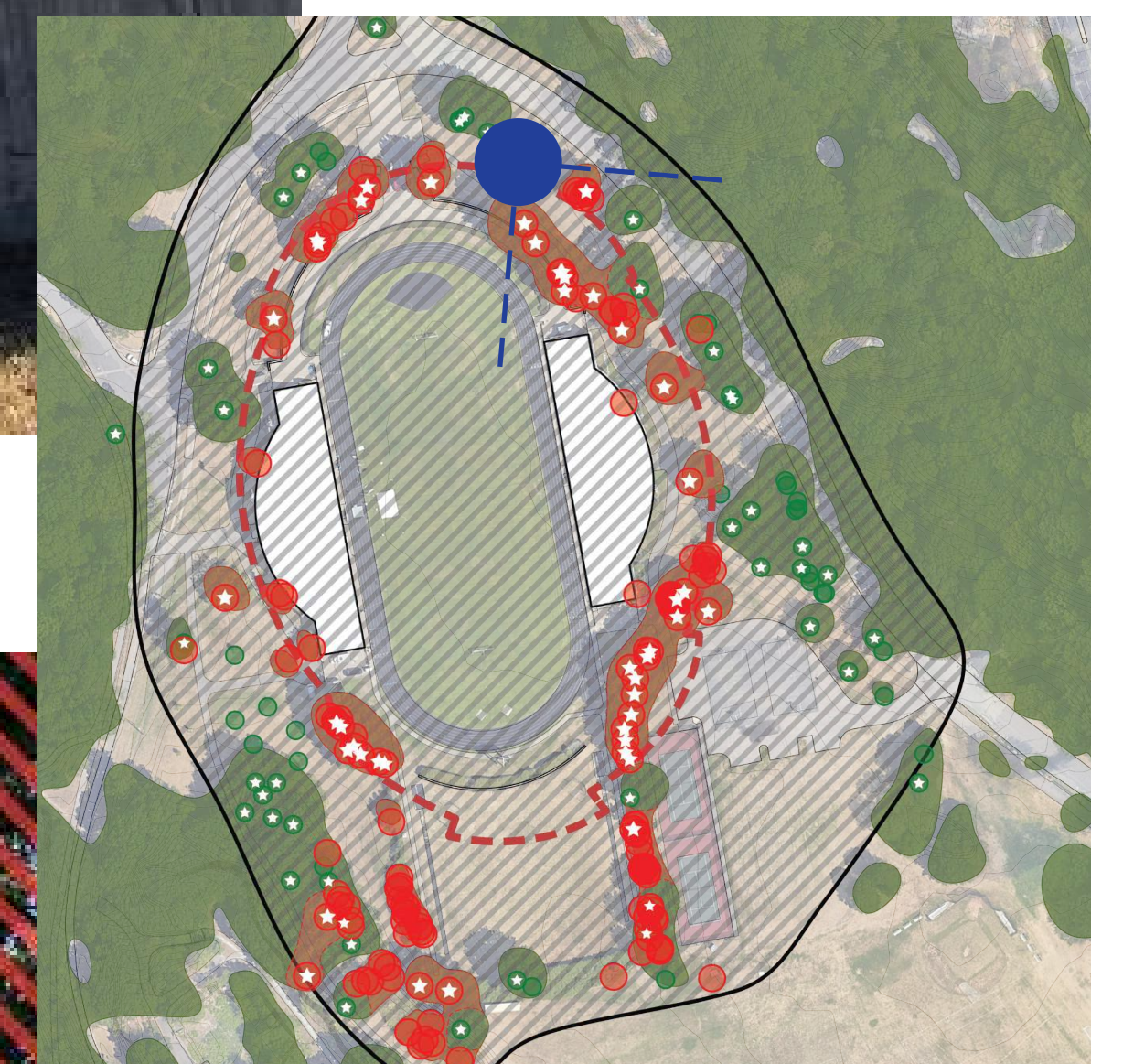
Tree Loss

White Stadium
in Franklin Park

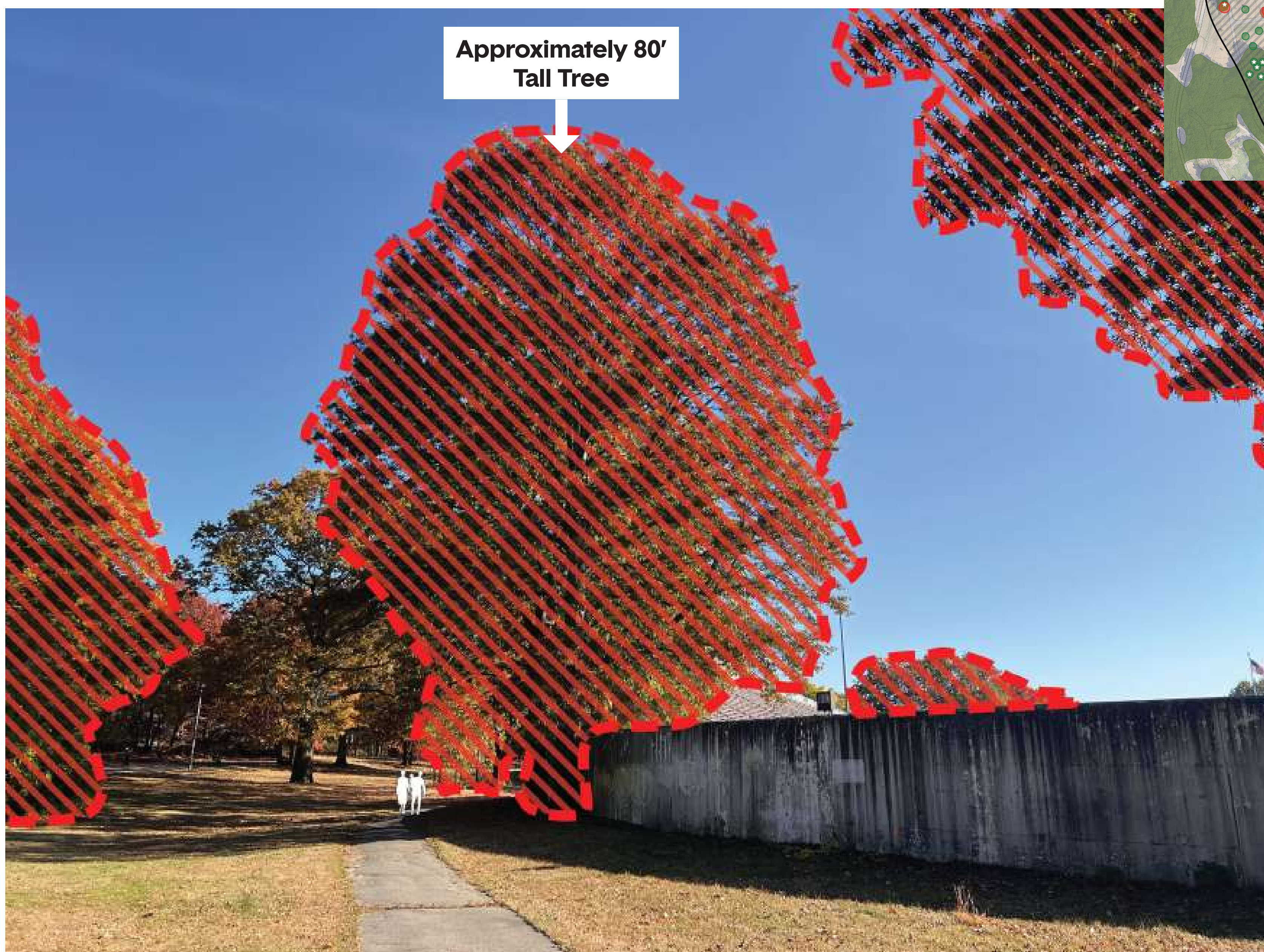
Associated with Proposed White Stadium Expansion



Existing View



Locus Map



Canopy Anticipated to be Removed

All Tree Locations, Data, and Consideration for Removal Based upon "Tree Preservation Report" Dated May 6, 2024, Prepared by Bartlett Tree Experts for Stantec and Accessed via the City of Boston Records.

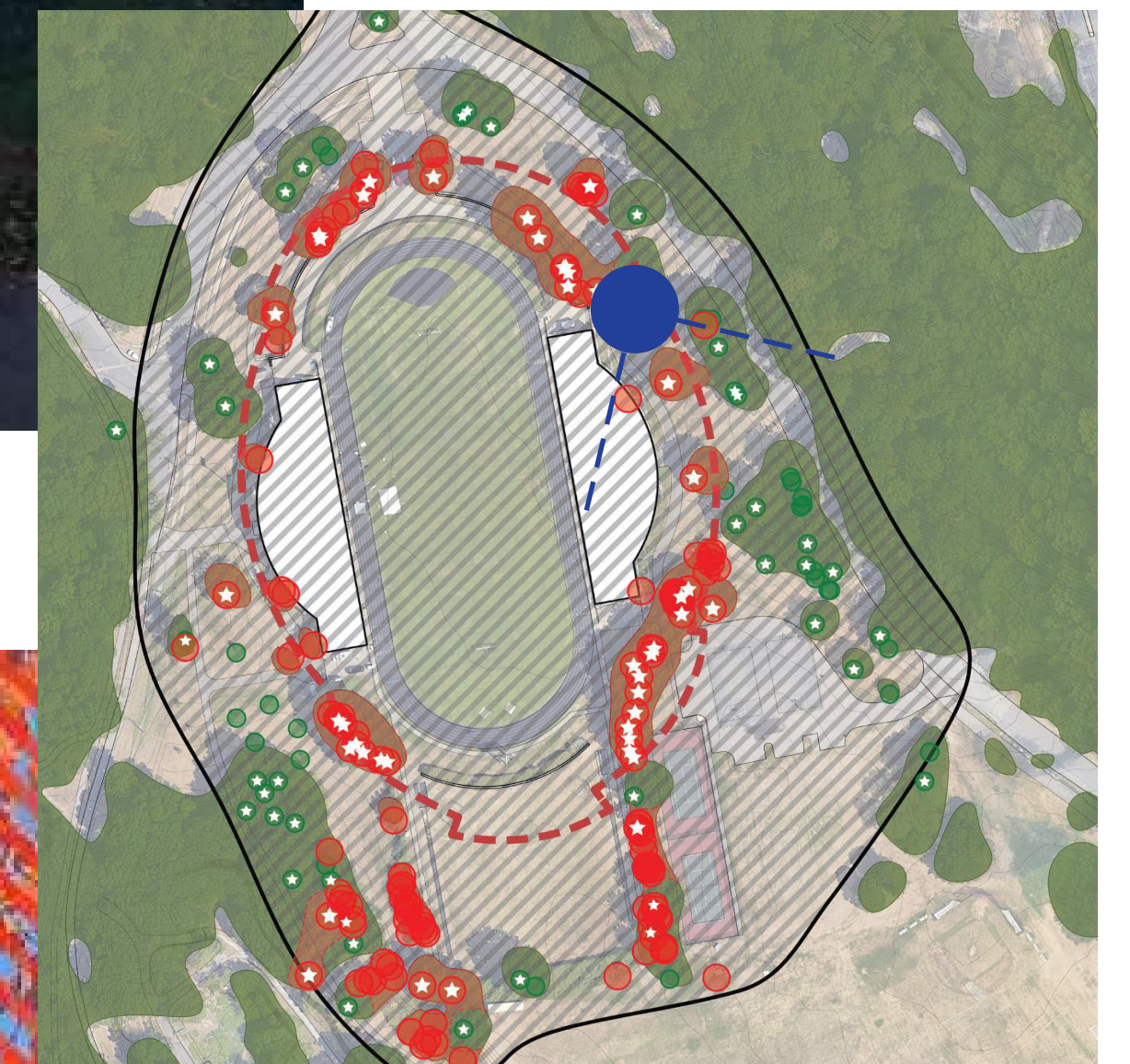
Tree Loss

White Stadium
in Franklin Park

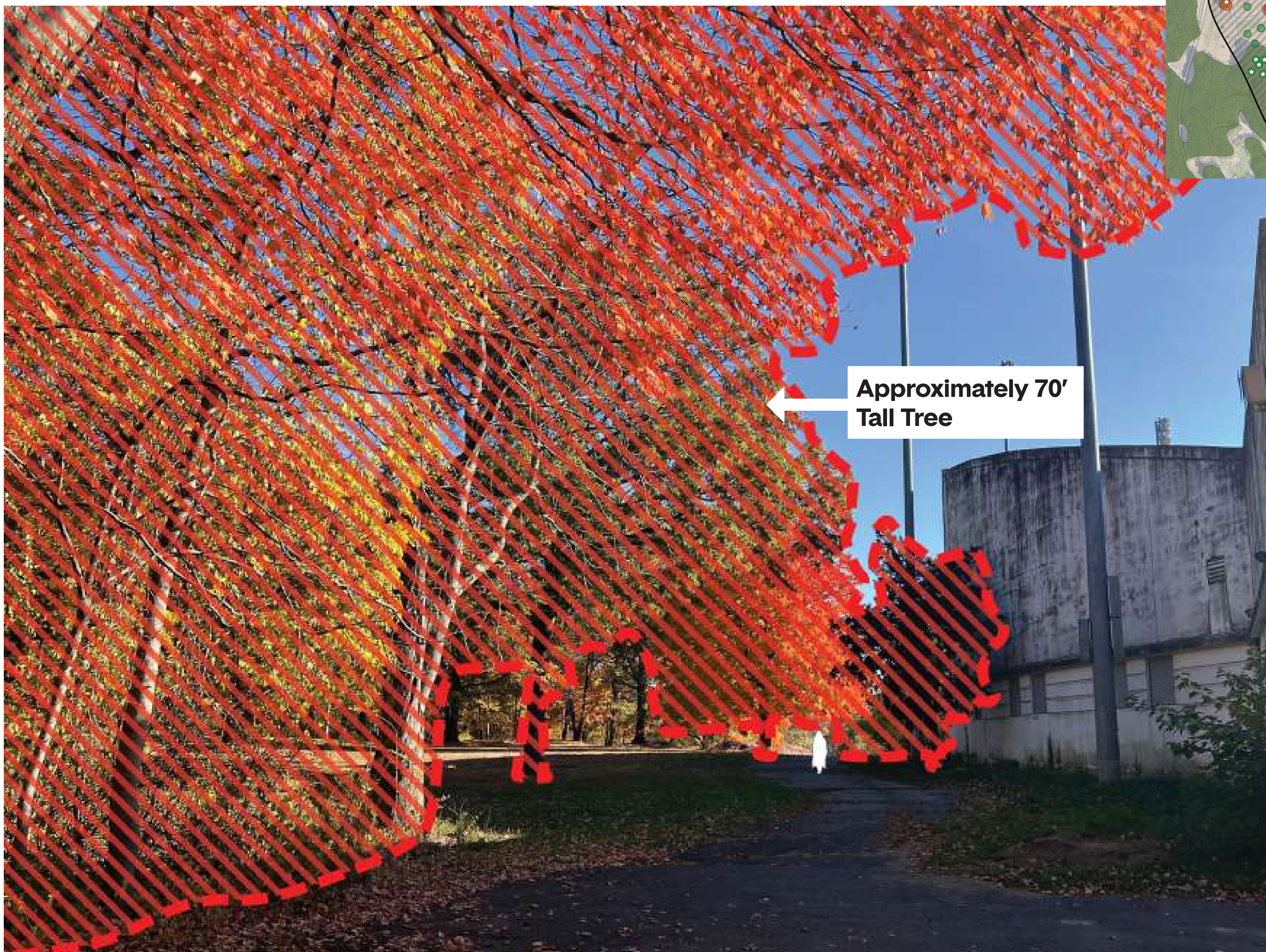
Associated with Proposed White Stadium Expansion



Existing View



Locus Map



Canopy Anticipated to be Removed

All Tree Locations, Data, and Consideration for Removal Based upon "Tree Preservation Report" Dated May 6, 2024, Prepared by Bartlett Tree Experts for Stantec and Accessed via the City of Boston Records.

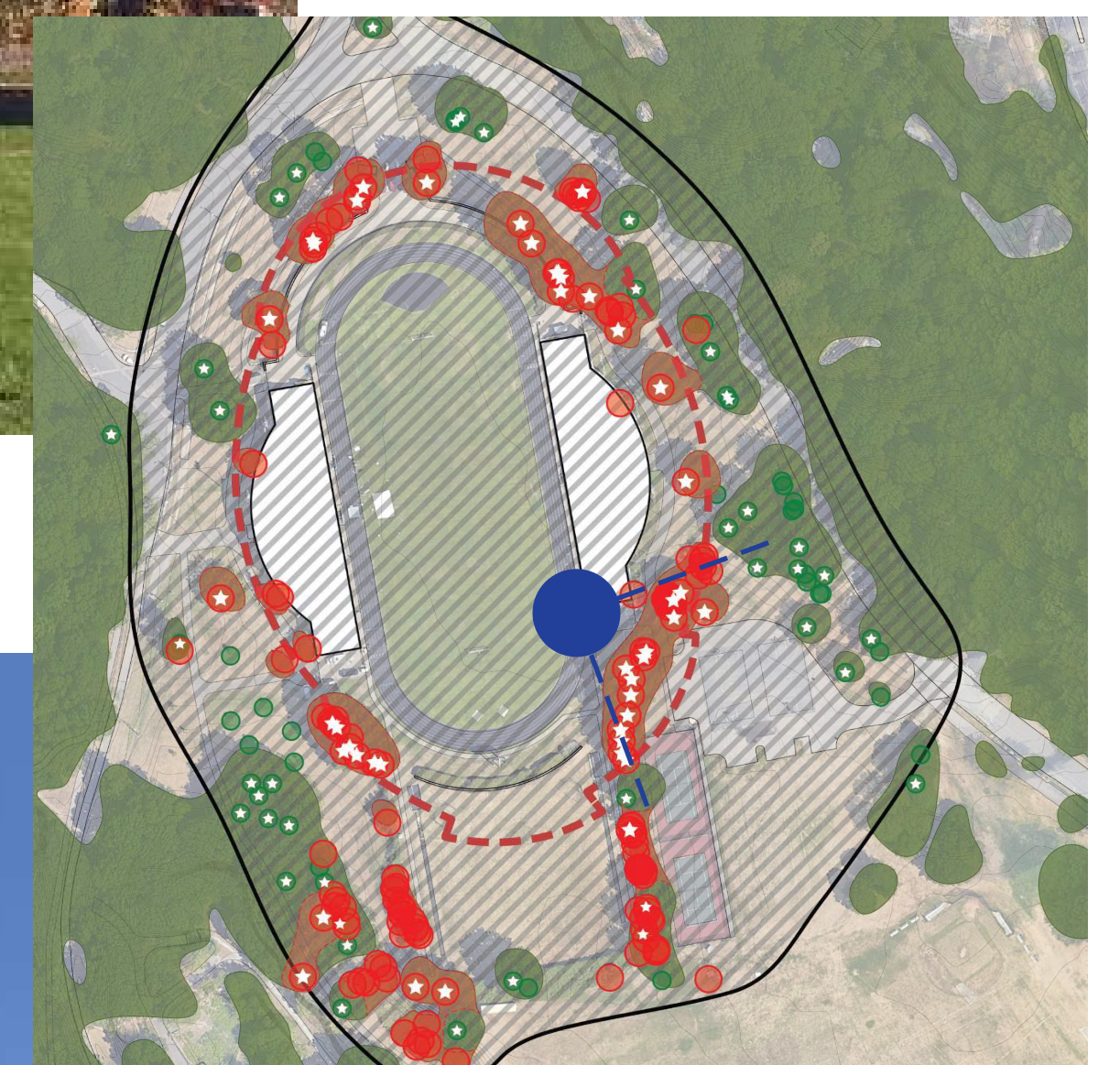
Tree Loss

White Stadium
in Franklin Park

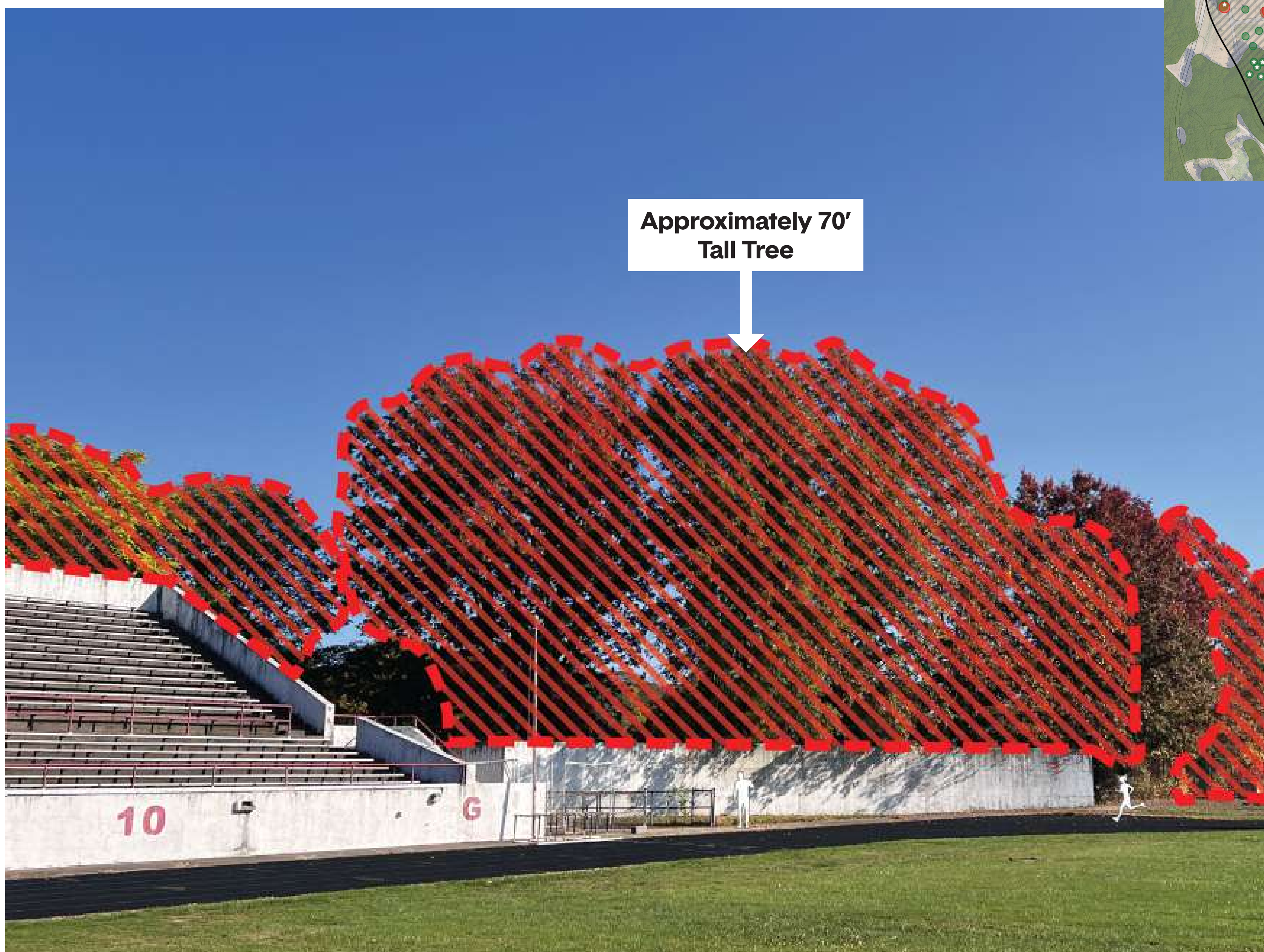
Associated with Proposed White Stadium Expansion



Existing View



Locus Map



Canopy Anticipated to be Removed

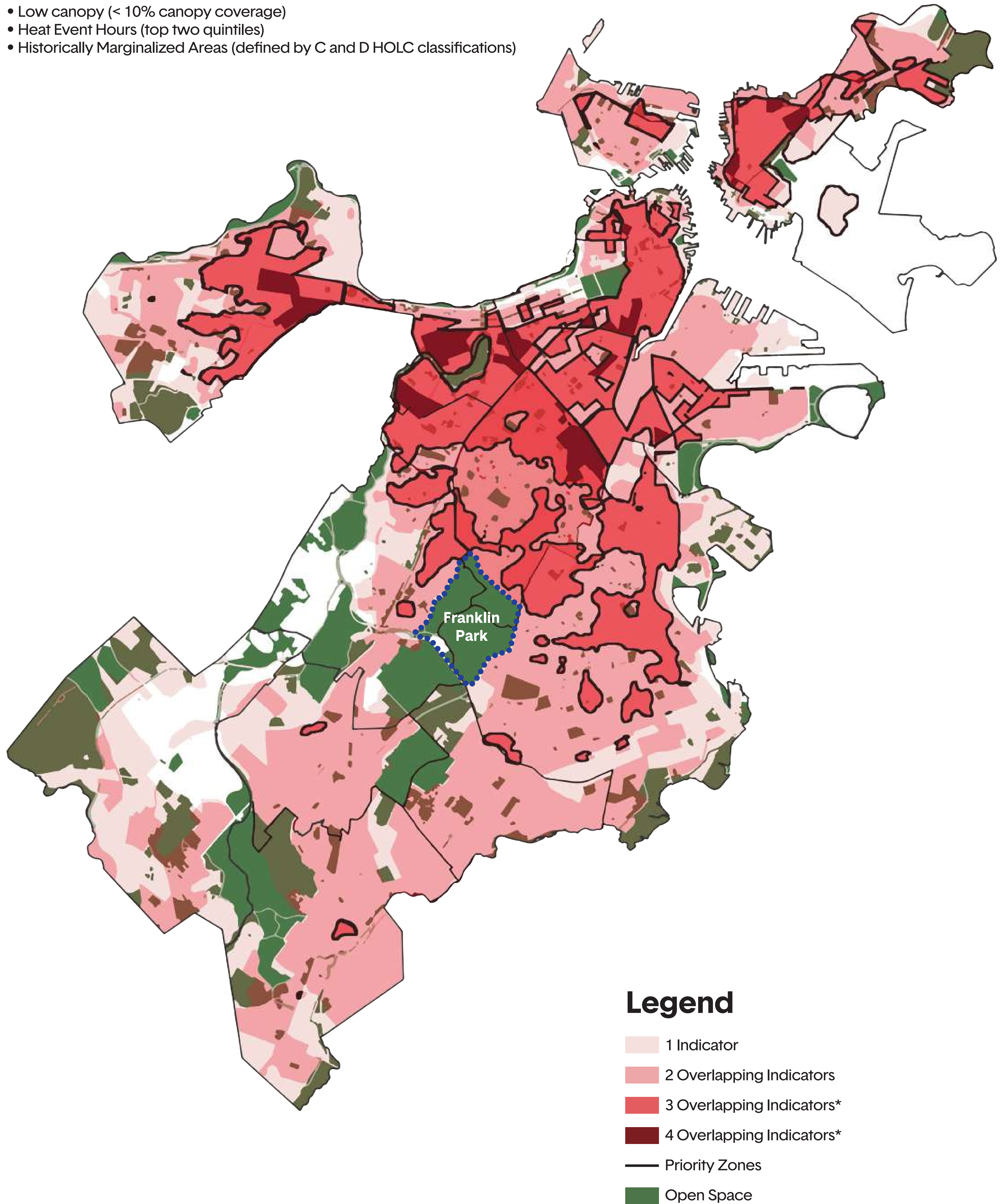
All Tree Locations, Data, and Consideration for Removal Based upon "Tree Preservation Report" Dated May 6, 2024, Prepared by Bartlett Tree Experts for Stantec and Accessed via the City of Boston Records.

Urban Forest Priority Zones

Priority zones are a way to focus efforts, but should not prevent action in areas not highlighted in this map. Many priority populations, for example, live in areas with relatively high overall canopy, but in which canopy cover is declining.

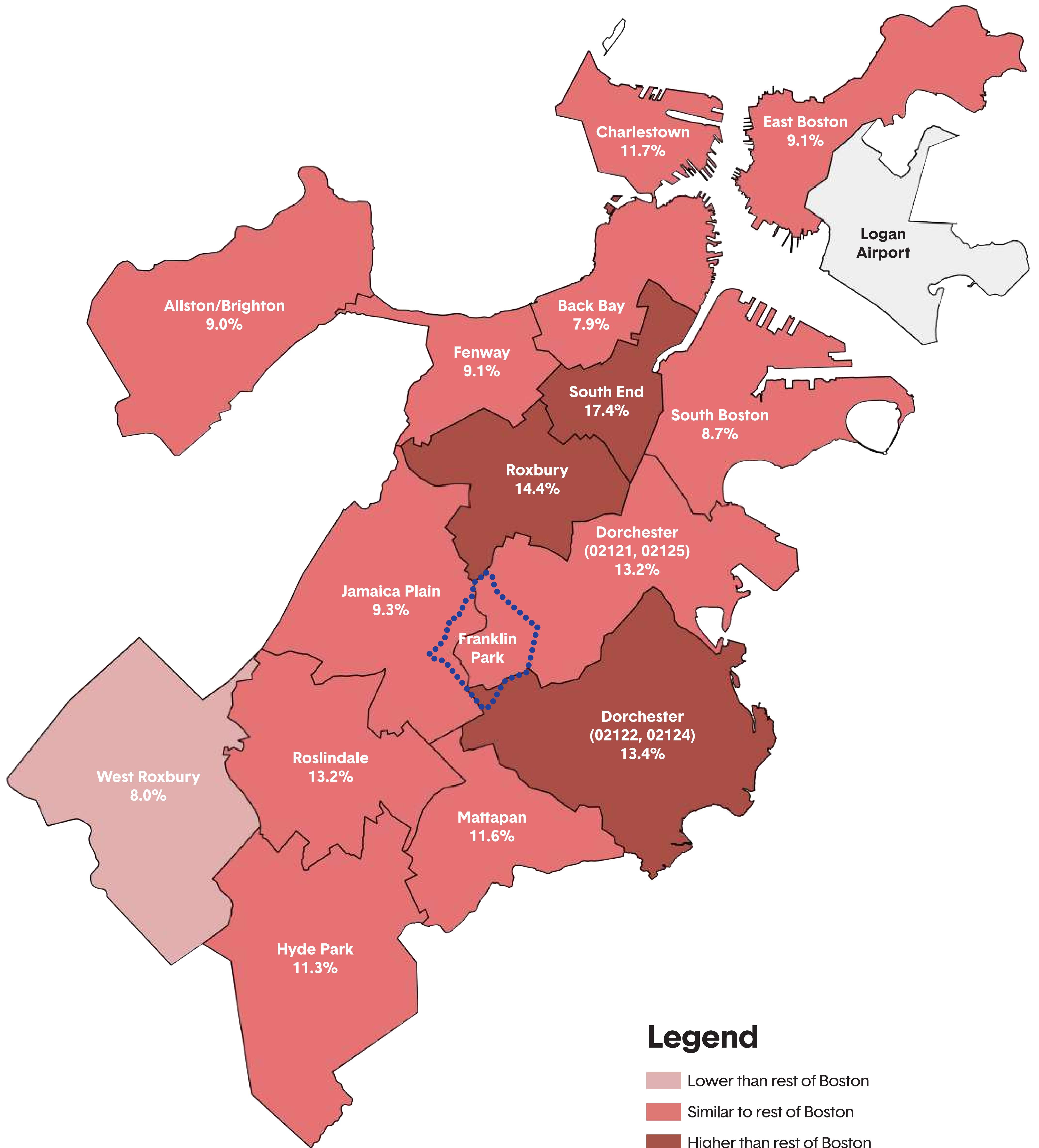
Priority zones are determined by three or more overlapping prioritization indicators, which include:

- Environmental Justice Census Blocks
- Low canopy (< 10% canopy coverage)
- Heat Event Hours (top two quintiles)
- Historically Marginalized Areas (defined by C and D HOLC classifications)



Asthma Rates

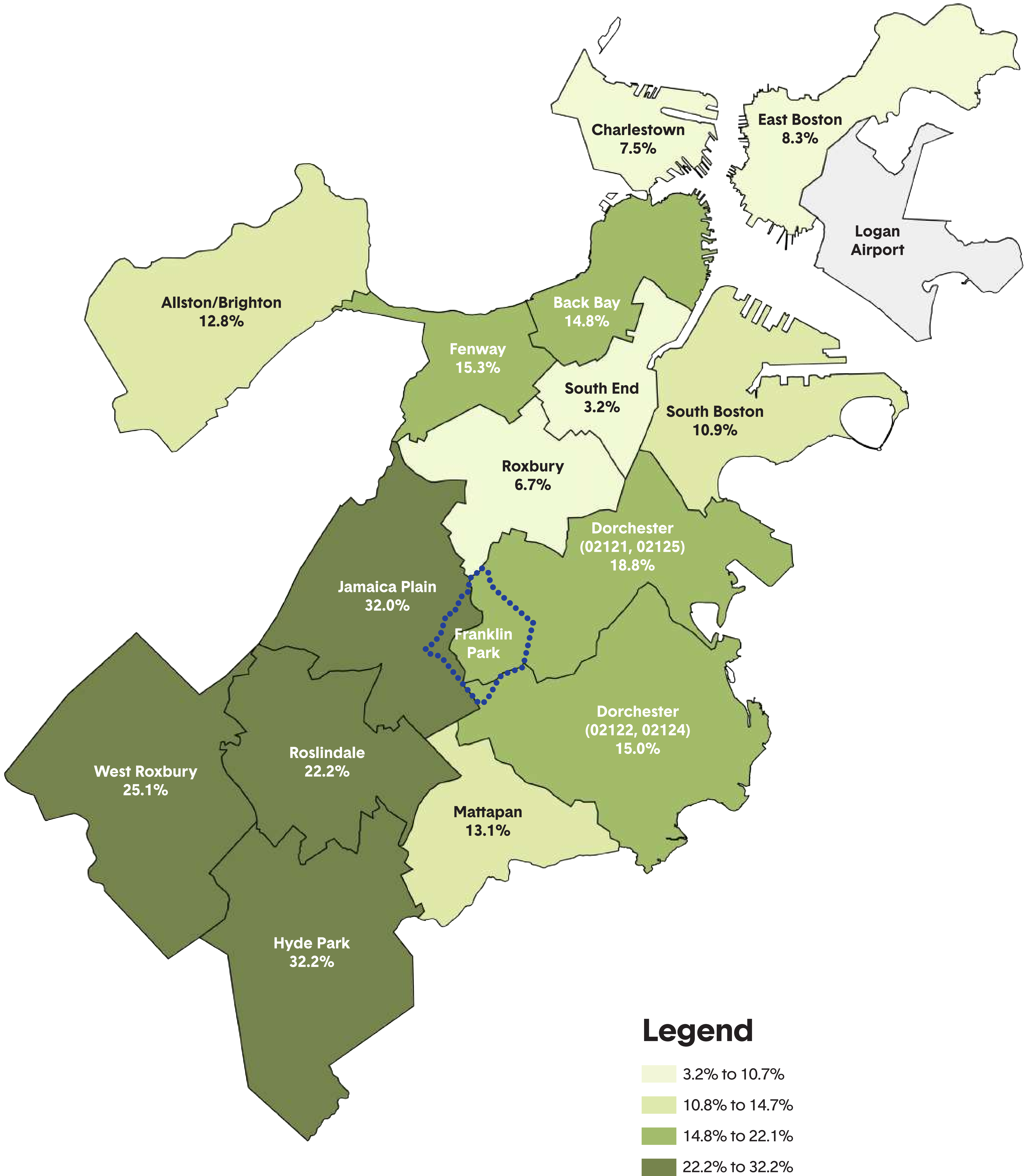
Percent of Adults with Asthma by Neighborhood, 2017, 2019, and 2021



Extracted from City of Boston 2023 "Health of Boston" Reports
South End Neighborhood includes Chinatown
Back Bay Neighborhood includes Beacon Hill, Downtown, West End, and North End

Open Space

Percentage of General Open Space by Neighborhood, 2023



Extracted from City of Boston 2023 "Health of Boston" Reports
South End Neighborhood includes Chinatown
Back Bay Neighborhood includes Beacon Hill, Downtown, West End, and North End

157 Trees Lost

White Stadium
in Franklin Park

Associated with Proposed White Stadium Expansion

In one year, these trees would have benefited the community by:

Absorbing

72,305 pounds of CO₂

Equivalent to approximately 82,000 miles driven in a car.¹

Intercepting

252,035 gallons of stormwater runoff

Equivalent to a 0.5" - 1.25" rain event across the entire White Stadium Area

Providing shade that reduces the need for cooling energy by

12,460 kilowatt-hours

Equivalent to the energy used annually to cool 22 homes in MA.

All Tree Data, and Consideration for Removal Based upon "Tree Preservation Report" Dated May 6, 2024, Prepared by Bartlett Tree Experts for Stantec and Accessed via the City of Boston Records. Impact calculations from Arbor Day Foundation "National Tree Benefit Calculator."

1. Based on the EPA listed average emissions per car-mile.
2. Based on metrics published by the Energy Efficiency Advisory Council.