



Connecting People and Parks and Conserving the Emerald Necklace

CHARLES GATE PARK • BACK BAY FENS • RIVERWAY • OLMSTED PARK • JAMAICA POND • ARNOLD ARBORETUM • FRANKLIN PARK

Karen Mauney-Brodek, President

June 17, 2020

BOARD OF DIRECTORS

Benjamin Taylor, *Chair*
John R. Cook, Jr., *Vice Chair*
Martin Hall, *Treasurer*
Susan Helms Daley, *Clerk*
Louis Bailey
Peter Barber
Constance Cervone
Ellie Cornish Chu
Christine Cusick
James K. Cornell
Chris DeSisto
Courtney Forrester
Sarah Freeman
Julie Hume Gordon
Marjorie Greville
Beth Krudys
Lois R. Kunian
Ted Landsmark
Sofia Lingos-Papaliadis
Barbara Millen
Lee Moreau
Allison O'Neil
JoAnn Robinson
Chair, Park Overseers
Peter Sougarides
Leo Swift
Linda Edmonds Turner
Kate Velásquez-Heller
Carroll Williamson

Life Trustees

Michael Dukakis
Wendy Shattuck

PARK OVERSEERS

Arboretum Park Conservancy
Arborway Coalition
Arnold Arboretum
Boston Committee of the
Garden Club of America
Boston Society of
Landscape Architects
Brookline GreenSpace Alliance
Charlesgate Alliance
Emerald Necklace
Greenway Project
The Fenway Alliance
Fenway Civic Association
Fenway CDC
Fenway Garden Society
Franklin Park Coalition
Franklin Park Zoo /
Zoo New England
Friends of Jamaica Pond
Friends of Leverett Pond
Friends of the Muddy River
Isabella Stewart Gardner Museum
Jamaica Hills Association
Jamaica Pond Association
MASCO
Museum of Fine Arts, Boston

Dear Friend of the Conservancy,

Since March, the importance of parks and Boston's Emerald Necklace has never been clearer. To limit the spread of COVID-19, schools, museums, gyms, businesses and so many other community gathering spaces have been closed.

Yet our public parks have remained open and cared for, thanks to our public partners and your consistent support over the years. The parks would not be the places they are today without your dedication. In a moment when our community is more reliant than ever on these green spaces for health and wellbeing we are grateful for your generous contributions and commitments that have made the Necklace a support system for so many.

We are thrilled to share with you the Emerald Necklace Conservancy's 2019 Annual Report, and all the efforts and accomplishments that kept us busy and improved the Emerald Necklace this past year. At the same time, we acknowledge that our work, and your support, comes as we continue to live with the very real difficulties and consequences of both COVID-19 and rampant racism.

In these challenging times, we have included a list of a few of the resources and activities we have created and curated to keep park users safe and engage with the Emerald Necklace, both physically and remotely. The Emerald Necklace is here for you – whether you visit the parks in person or in spirit!

Wishing you well,
Karen Mauney-Brodek, President

Ways to Experience the Necklace from Home:

- Learn about upcoming virtual events on our [Facebook page](#).
- Find nature inspiration through beautiful photography on [our Instagram](#).
- For fun park facts and park information, [follow us on Twitter](#).
- Enjoy a three-movement [symphony](#) inspired by the Emerald Necklace parks

Ways to Experience the Necklace in Person:

- Look for our signs, featuring park maps and safety tips, throughout the Necklace.
- Use your mobile device to visit our mobile tour guide at [emeraldnecklace.tours](#), filled with history, facts and points of interest around the Necklace.

For a complete list of resources, please visit:
<https://www.emeraldnecklace.org/here-for-you/>

To read our Statement of Solidarity, please visit:
bit.ly/solidarityenc

MORE THAN MEETS THE EYE

Annual Report 2019



Emerald Necklace
CONSERVANCY

*“ Take a closer look. Take another.
The Necklace is so much more than what
you see at first glance — it is an engineering
marvel rooted in love for the city. ”*



DEAR FRIENDS,

More than meets the eye. When Frederick Law Olmsted designed the Emerald Necklace's 1,100 acres, he envisioned not only a mechanism to keep the city healthy and free of flooding, but also an environment intentionally designed to delight and refresh. The Necklace is at once a park, a water management machine, a response to a public health need, a mitigator of climate change and a triumph of green infrastructure. Hidden below its lush surfaces, various pipes, valves, gauges and gates work in concert with the green spaces above to reduce pollution, lessen the effects of major weather events and direct water flow.

The Conservancy functions much the same way: underlying our efforts is a strong supporting cast of volunteers, donors, board members, Park Overseers, advocates, public partners and friends. Like the infrastructure that supports the Necklace's role in creating a healthier, greener city, our network makes possible the fulfillment of our essential mission to the parks. In good times, and in challenging ones, the Conservancy is an expression of your time, dreams and generosity.

The world is in the midst of an extraordinarily challenging time. As our city, our state and our country cope with the impact of the COVID-19 pandemic, the importance of the Emerald Necklace – and the Conservancy's mission of preserving this public space – has never been clearer. Included with this Annual Report is a cover letter highlighting

the Conservancy's actions in response to the pandemic's onset in March. The report itself covers our activities and victories in 2019, before the pandemic. Even though our reality has changed, our work has never been more critical.

In 2019 we celebrated the Emerald Necklace by ensuring that its systems, visible and invisible alike, had ample opportunity to support the life of the city and its inhabitants – for honey bees to pollinate, for native trees, shrubs and perennials to bloom and grow and for neighbors and visitors to find peace. In addition to planting and pruning trees, we welcomed children and families to programs and tours, discussed the role the Necklace plays in improving public health, gathered for movies, concerts and fitness classes, worked with local schools and savored the Necklace's beauty. We're grateful to all of you who championed our mission over this past year – our volunteers who removed weeds, oftentimes by hand; our students, who saw their city in new ways; and our visitors, who watched and listened and noticed. We couldn't have done it without your help.

Take a closer look. Take another. The Necklace is so much more than what you see at first glance: it is an engineering and public health marvel rooted in love for the city and its people. Thank you for your continued support in honoring the Emerald Necklace and Olmsted's vision.



Board Chair Ben Taylor and President Karen Mauney-Brodek.



Karen Mauney-Brodek, *President*

Ben Taylor, *Board Chair*

EDUCATING OUR YOUTH

“I can use what I learned about nature in my daily life by continuing to be conscious of how my decisions affect the environment,” says a crew member from last summer’s Green Team. In 2019, 25 Green Team members and junior leaders learned about planting and pruning trees and shrubs, canoed and camped on overnight outdoor adventures, learned mindfulness strategies, worked with professional horticulturists and arboriculturists and developed their navigational skills, all while enjoying the natural experience of the Emerald Necklace parks.

Four teen leaders completed the intensive school-year Youth Leadership Program, which focuses on building leadership and communication skills and deepening participants’ understandings of life science and park maintenance. Our

youth leaders also took part in a green industry speaker series, learned about environmental career opportunities and developed their own environmental lesson plans for younger students.

Finally, our Canopy Classroom program welcomed 153 Boston third-graders to explore the parks, jump in puddles, study plants and animals and take a deeper look at a tangle of local ecosystems. Canopy Classroom students also received an educational lesson developed and taught by members of the Youth Leadership Program. We’re grateful to all of our education staff and volunteers who created so many meaningful opportunities for children and teens to gain a deeper understanding of the parks, the environment and our city.



“ I can use what I learned about nature in my daily life by continuing to be conscious of how my decisions affect the environment. ” —2019 Green Team Member

CARRY THE EMERALD NECKLACE IN YOUR POCKET

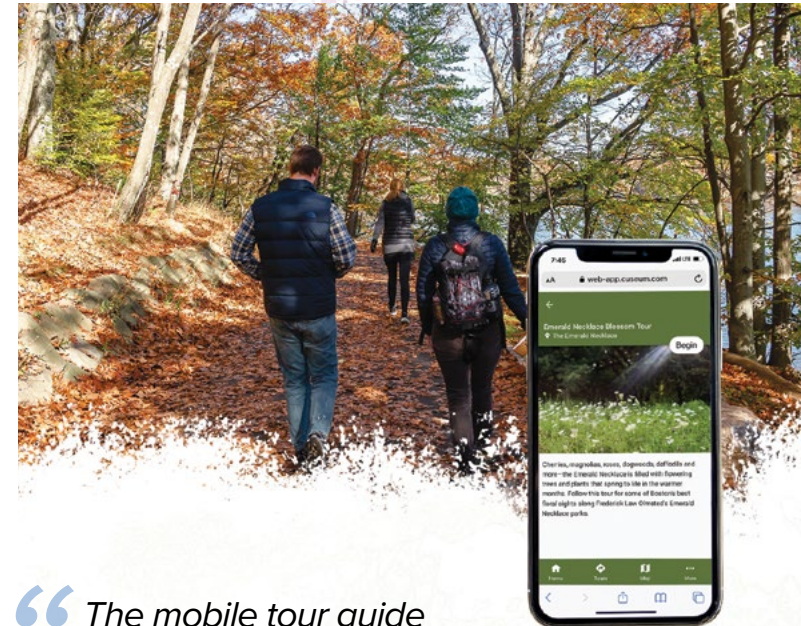
Did you know that a portion of the Muddy River also serves as part of the boundary between Boston and Brookline? As Olmsted's design for the Emerald Necklace changed the shape and course of the river, both municipalities adjusted their borders to follow the river's new path – a feat of diplomacy hard to imagine today! Learn more about the Emerald Necklace anytime, anywhere thanks to our expanded mobile tour guide, www.emeraldnecklace.tours. This ondemand resource highlights the untold stories and the history of the parks for visitors from all over the world.

In 2019, we added new, meticulously researched information for park visitors to use and explore throughout the year. We distilled facts and figures from hundreds of pages of books, websites, maps and more to provide the public with the best self-guided

tours available – and we're not done yet! In 2020, we look forward to featuring tours of spring blossoms and fall foliage, and sharing more undiscovered narratives about the Emerald Necklace.

“The mobile tour guide is a dynamic resource that allows us to update visitors with the latest park information at the click of a button. In addition to providing information on the Necklace's history, the tour guide shares information on park construction, tree work, landscape restoration efforts and more. It's more than a guide: it's a living and growing encyclopedia for all things Emerald Necklace,” says Evan Bradley, the Conservancy's Marketing and Communications Coordinator.

Check out www.emeraldnecklace.tours and discover your Emerald Necklace today!



“The mobile tour guide is a dynamic resource that allows us to update visitors with the latest park information at the click of a button.”

CELEBRATING GREEN SPACE AT PARTY IN THE PARK

In May, more than 700 guests gathered for an afternoon under a magnificent tent on the Franklin Park Playstead to amplify support and awareness for the Justine Mee Liff Fund. Attendees at the 16th Annual Party in the Park raised over \$990,000 for special landscape restoration projects throughout the Emerald Necklace, supporting projects for the Olmsted Tree Society, the Conservancy's Tree Management Plan and the Heritage Tree Program. We also completed the installation of the final water fountain funded by 2018's luncheon. Now, visitors – human and canine alike – can refill water bottles and enjoy the dog bowl outside our Shattuck Visitor Center in the Back Bay Fens!

“Party in the Park is the premier fundraising event for the Emerald Necklace and reinforces the importance of public-private partnerships in the parks’ care and keeping,” says Holly Safford, a longtime co-chair of Party in the Park. “This luncheon not only funds capital improvements and tree care throughout the Emerald Necklace – it underscores the many reasons parks and green spaces are so vital to urban life by providing respite, beauty and recreation.”

We are grateful to all who made last year's Party in the Park a success, and invite you to join us at the 17th Annual Party in the Park in Franklin Park on May 12, 2021. Learn more at www.emeraldnecklace.org/party-in-the-park.

Top: Party in the Park Committee Chairs (L-R): Danielle Frissell, Catheline van den Branden, Holly Safford, founder Wendy Shattuck, Kathleen McIntyre and Catherine Creighton. Middle: Guests fill the tent at the 16th Annual Party in the Park. Bottom: President Karen Mauney-Brodek, 2019 Liff Spirit Award Honoree and Philadelphia Parks Commissioner Katherine Ott Lovell and Ursula Liff.





INVESTING IN OUR TREES

Since its founding in 2013, the Olmsted Tree Society has maintained a critical focus on the Emerald Necklace's tree canopy, in public partnership with the Boston Parks and Recreation Department, the Brookline Parks and Open Space Division and the Massachusetts Department of Conservation and Recreation. In addition to making major investments in the trees through planting, pruning and soil improvements – more than one million dollars to date – the Society educates the public about the fragile relationship between trees and a healthy urban ecosystem. Last year, we made significant strides toward completing our 2015-2020 Master Plan for more than 8,000 trees in the Emerald Necklace: 300 trees were pruned in and along the Necklace in 2019, with plans finalized for pruning another 4,900 trees in 2020. In May, we removed invasive weeds and refreshed the forest understory with new plantings in Olmsted Park's woodlands. In the fall, we partnered with the Charlesgate Alliance to prune every tree in Charlesgate Park for the first time in recent memory. Altogether, our work is fostering a stronger, healthier tree canopy throughout the Emerald Necklace.

To learn more about the Olmsted Tree Society, or to adopt a Heritage Tree in the parks, visit www.emeraldnecklace.org/olmsted-tree-society.

“Altogether, our work is fostering a stronger, healthier tree canopy throughout the Emerald Necklace.”



VOLUNTEERS

1,092 volunteers donated their time to the Conservancy in 2019, completing essential work like pruning roses in the Kelleher Rose Garden, removing invasive plant species in Franklin Park, representing the Conservancy as ambassadors at community events, picking up trash and raking leaves in the Back Bay Fens and participating in our annual Muddy River Cleanup in April. Their collective efforts contributed 2,882 hours toward the care and maintenance of the Necklace's 1,100 acres.

We are grateful to all of our volunteers who work hard to keep the Necklace a place everyone can enjoy, or help behind the scenes at the Conservancy's offices. Interested in volunteering? Sign up today at www.emeraldnecklace.org/volunteer.

1,092
VOLUNTEERS

2,882
VOLUNTEER HOURS



RESTORING 1,100 ACRES

In 2019, we continued to focus on restoring the Emerald Necklace's landscape, tracking and removing aggressive and harmful invasive plants like Japanese Knotweed. In Franklin Park, volunteers used GPS and mapping software to manage and remove the plant, often by hand! In Olmsted Park, our ongoing partnership with the Massachusetts Department of Conservation and Recreation also resulted in the treatment and removal of invasive plants. This important work restores habitats and allows native species to thrive.

We also enjoyed the fruits of past restoration projects in 2019. Olmsted Park's Willow Pond Meadow, replanted in 2018, has become an active habitat for butterflies, bees and other pollinators. Visitors to the meadow can savor the beauty of Queen Anne's lace, asters, golden alexanders and more than a dozen other plant species.

With 1,100 acres of land to maintain and restore, our work in the Necklace is never done. Thank you for lending a hand!

“ In Franklin Park, volunteers used GPS and mapping software to manage and remove the plant, often by hand! ”

SUMMER FUN IN THE EMERALD NECKLACE

For the first time in the series' 12 years, the 2019 *Summer on the Emerald Necklace* series brought our signature summer programs to each of the Necklace's parks. Nearly 2,000 visitors gathered for a variety of free events during the series' six weeks. We doubled and diversified our fitness offerings to include tai chi in Olmsted Park and bootcamp classes in the Back Bay Fens and the Riverway. At Charlesgate Park and the Fenway Victory Gardens, movie lovers shared popcorn and laughs under the stars while watching *Fever*

Pitch and *Willy Wonka and the Chocolate Factory*. Families hummed along, danced and listened to Latin jazz, classical, folk and children's hits at six family concerts at Olmsted Park, Jamaica Pond and Franklin Park.

We look forward to further expanding our program of concerts, movie nights, fitness and yoga classes in the coming summers, and discovering new ways to engage our neighbors and guests throughout the Emerald Necklace. Stay tuned for our summer offerings at www.emeraldnecklace.org/SEN.



CHAMPIONING A SAFER, HEALTHIER NECKLACE

When it comes to making the parks more accessible and sustainable, our voice is one of our strongest assets. The Conservancy, our Board of Directors and dedicated Park Overseers continue to push for investment in the Emerald Necklace by collaborating with city and state officials, supporting increased park budgets at the city and state levels, attending meetings, communicating frequently with our constituents and bringing together park supporters Necklace-wide. In 2019, our efforts helped to bring in transportation improvements and beneficial environmental policies to the parks. Among these are a roadway safety audit for the Arborway parkway, which identified short and long-term pedestrian and cycling improvements for the road, and an expanded wetlands ordinance, which gives Boston greater authority to protect its wetlands.

The Conservancy also continued our support of the Army Corps of Engineers' work on "Phase 2" of the Muddy River Restoration Project. We look forward to "Phase 2" construction, including the dredging of sediment from significant portions of the river, removal of invasive plants from the shoreline and its restoration with native plants, beginning in 2020.

Additionally, we provided public feedback and facilitated communication on two major projects completed by the City of Boston's Parks and Recreation Department in 2019: replacing the fence and hedges at the Kelleher Rose Garden and repaving the path network at Jamaica Pond. With our public partners and our team of advocates, we're building a better Emerald Necklace for all.



Top: Joggers enjoy repaved pathways at Jamaica Pond. Bottom: The Kelleher Rose Garden blooms following restoration work by the Boston Parks and Recreation Department.

BIG IMPROVEMENTS PLANNED FOR CHARLESGATE PARK

Tucked between an overpass and a tangle of busy roads lies Charlesgate Park – more than 13 acres of parkland, hiding in plain sight. In the 1880s, Frederick Law Olmsted designed this park as a keystone: a green space that was both the start of the Emerald Necklace and its connection with the Charles River Esplanade and the Commonwealth Avenue Mall. In the mid-twentieth century, the construction of Storrow Drive and the Bowker Overpass severed these links. These roads effectively decommissioned over 13 acres of parkland in the heart of the city, contributed to significant pollution and drainage issues for the Muddy River and, over time, rendered the Charlesgate area into an unwelcoming space many no longer consider a park.

In 2017, the Conservancy partnered with a new neighborhood group, the Charlesgate Alliance, to revive Charlesgate Park and restore Olmsted's plan to connect the Necklace to its adjoining green spaces. Led by our President Karen Mauney-Brodek, we secured a seed grant from The Lawrence & Lillian Solomon Foundation to kickstart this process. This initial support, combined with Karen's background in park design and managing public processes, allowed us to develop a community outreach plan, hire architectural firm Landing Studio as our project designers and gather feedback from hundreds of residents to re-envision Charlesgate Park. In 2019, we reached a major milestone in this process: the completion of a conceptual plan for the park's revitalization.

"Completing this plan – the vision – for Charlesgate Park is a major milestone," says Mauney-Brodek. "It's a transformative and forward-thinking concept for the future of this neighborhood and regional amenity. The Emerald Necklace Conservancy is proud to champion and support the revitalization of Charlesgate Park, and the community-led process that brought us this thoughtful design."





Among other improvements, Landing Studio's concept includes an expanded pathway network that will reconnect Charlesgate to the rest of the Necklace, relink it to the Esplanade and Commonwealth Avenue and reinstate a critical green space juncture to towns throughout Greater Boston. With these connections re-established, parks – not highways and overpasses – will reunite towns and neighborhoods as distant as Newton, Watertown, Cambridge and Dorchester.

Residents and visitors can also look forward to one of Boston's largest dog parks, a universally-accessible children's play area and restorative rain gardens and wetland areas along the Muddy River. "This project could restore the spirit of Olmsted's Emerald Necklace at Charlesgate, as a mobility and water management network," says Dan Adams, Landing Studio principal.

In less than three years, the Conservancy and the Alliance leveraged that initial seed grant to raise \$650,000 for a detailed planning and design process for Charlesgate Park, drawing in new support from the Department of Conservation and Recreation, Boston's Community Preservation Act and local elected officials. We anticipate the completion of a full, shovel-ready design in the fall of 2020!

"What was our wildest dream is now our default design," says Parker James, co-founder of the Charlesgate Alliance. "None of this would be happening without our advocacy and enthusiastic support from the Emerald Necklace Conservancy. This is truly an alliance."

\$650,000

FUNDS RAISED BY EMERALD NECKLACE
CONSERVANCY AND CHARLESGATE ALLIANCE

CHARLESGATE PARK VISION



KEY

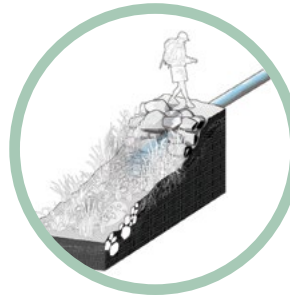
SHARED-USE PATHWAY

STORMWATER DISSIPATION BASIN

New stormwater management systems will prevent runoff from surrounding roads from directly entering the Muddy River. Instead, runoff will be filtered with planted bioswales and green retention areas before entering the river.

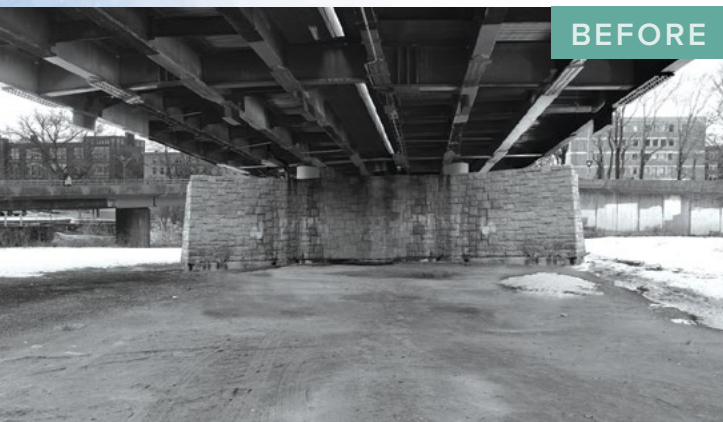
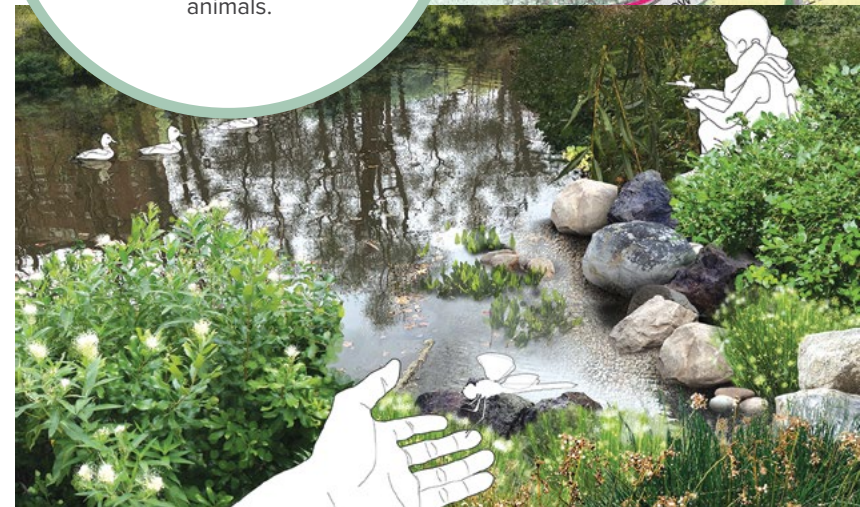
IMPROVING THE MUDDY RIVER SHORELINE

Charlesgate's stone-armored shoreline severely compromises habitats for aquatic flora and fauna, allows untreated runoff to enter the waterway and exacerbates flood events. A restored, naturalistic shoreline will help mitigate these issues.



WATER'S EDGE

A reshaped and replanted shoreline will restore Charlesgate Park's role as a water management system for the Muddy River and provide habitat for aquatic plants and animals.



BEFORE



DOG PARK

The Charlesgate Dog Park — a highly-requested neighborhood amenity that, once built, would be among the largest in Boston — would activate the park throughout the day and provide a variety of spaces for dogs.



Charles River Esplanade

Charles River

“BOWL AND BRIDGE”

An expanded pathway network could open up parts of Charlesgate Park currently inaccessible to the general public and reconnect the park with the Charles River Esplanade, Commonwealth Avenue Mall and destinations beyond.

PLAYGROUND AND “NORTH FIELD”

Opening up the landscape to create new sightlines, building a brand-new, universally accessible playground and redesigning underutilized spaces for community programming will create a new destination at Charlesgate Park for neighbors and passers-by.

“SOUTH FIELD”

An expanded pathway network (in pink) would open up new connections between the park and the surrounding area — including a bridge over the Muddy River to Newbury Street.

BEFORE

BEFORE

BEFORE

BUILDING A BETTER NECKLACE, TOGETHER

Several partners, veteran and new alike, helped us spread our message and reach new audiences last year. Once again, we're grateful for the support of *Boston* magazine and their annual *Best of Boston* event, which benefited our work with a portion of ticket sales. Our newest partners supported the Emerald Necklace by eating and drinking well. Cheers to Trillium Brewing Company, who pledged a brew for each Emerald Necklace park and a donation of a portion of proceeds from the limited-edition *The Fens*, an IPA brewed to honor the park's vibrant, "hoppy" history. We're also grateful to Flour Bakery + Cafe for helping us "raise some dough" through their Flour App last

summer. Capitalizing on Boston's new single-use plastic bag ban, Stop & Shop also pitched in by donating proceeds from their Boston store paper bag sales and promoted the Conservancy in stores.

Special thanks to the Isabella Stewart Gardner Museum, whose exhibition *Big Plans: Picturing Social Reform* featured original maps of the Necklace and other Olmsted projects. We also worked with our community partners to stage some great public events in 2019, like the annual Opening Our Doors festival and Fenway Porchfest, which brought local bands to the Shattuck Visitor Center in partnership with the Fenway Civic Association, Fenway CDC and the Fenway Alliance.

Our successes are not ours alone – we thank all of our partners who help make the Necklace a truly spectacular and engaging place!

“Our successes are not ours alone – we thank all of our partners who help make the Necklace a truly spectacular and engaging place!”

(L): Photographers gather in the Back Bay Fens for a Conservancy-led photowalk.
(R): Conservancy staff on a tour of the Rose Kennedy Greenway.



HONORING JANET ATKINS AT AN EMERALD EVENING

In November 2018, we honored longtime Conservancy volunteer and former board member Janet Atkins with the Olmsted Award of Excellence at An Emerald Evening, our biennial fundraising event for the Conservancy's Emerald Fund. Against the backdrop of the Museum of Fine Arts' Koch Gallery, the celebration, chaired by Alan and Sherry Leventhal, focused on the mission and multifaceted work of the Conservancy as well as Ms. Atkins' years of dedicated service to this organization. Over the past several decades, Ms. Atkins served as a force for improving and restoring Olmsted's vision for the Necklace. We are grateful for her service on the Conservancy Board, co-chairing Party in the Park, assisting in the restoration of the Kelleher Rose Garden and Fountain, launching the Olmsted Tree Society and Emerald Necklace Tree Inventory and, above all, her leadership.

Says Atkins, "The Emerald Necklace we strive for will be a 21st century vision of the 19th century park, but if it holds Olmsted's promise of providing those "feelings of enhanced freedom" to the users, and the sustainability principles he forwarded, we can ensure a park and a green future for Boston of which we can all be proud. I am counting on all of you, each of you, to do your part."

“We can ensure a park and a green future for Boston of which we can all be proud. I am counting on all of you, each of you, to do your part.”

Janet Atkins (L) addresses Conservancy supporters at the Museum of Fine Arts.



EXPANDING VISITOR SERVICES AND PUBLIC PROGRAMS

In 2019, 3,915 guests stopped by the Shattuck Visitor Center to learn from docents and Conservancy staff, view our visitor displays, pick up a map and chat with our knowledgeable Visitor Center Assistant – a position added to our ranks to continue improving our visitors' experiences in the parks. We also welcomed 455 visitors to the Emerald Necklace on 35 tours, led by our indomitable team of volunteer docents.

We expanded our public programming with the addition of *Pond Life Exploration* in partnership with Mass Audubon's Boston Nature Center, which invited families to discover the secret pond lives of dragonflies, voles, shrews and other creatures at Franklin Park's Scarboro Pond.

We also added photo walking tours of the Back Bay Fens and Jamaica Pond, inviting novice and professional photographers to explore the natural beauty and photographic vistas of the city and its green spaces.

Finally, at our 2019 Annual Meeting, we welcomed the public and friends of the Conservancy for a dialogue on parks and health. More than 100 guests heard from experts on human health and landscapes, healthy living and the economics of green spaces.

Learn more about our tours and other public programs in the Emerald Necklace at www.emeraldnecklace.org/events.

3,915

GUESTS AT
THE SHATTUCK
VISITOR CENTER

455

VISITORS ON
DOCENT-LED
TOURS



BOARD OF DIRECTORS

Benjamin Taylor, *Chair*
John R. Cook, Jr., *Vice Chair*
Martin Hall, *Treasurer*
Susan Helms Daley, *Clerk*
Louis Bailey
Peter Barber
Ellie Cornish Chu
Christine Cusick
James K. Cornell
Chris DeSisto
Courtney Forrester
Sarah Freeman
Julie Hume Gordon
Marjorie Greville
Beth Krudys
Lois R. Kunian
Ted Landsmark
Sofia Lingos-Papaliodis
Barbara Millen
Lee Moreau
Allison O'Neil
JoAnn Robinson, *Chair, Park Overseers*
Peter Sougarides
Leo Swift
Linda Edmonds Turner
Kate Velásquez-Heller
Carroll Williamson

LIFE TRUSTEES

Michael Dukakis
Wendy Shattuck

PARK OVERSEERS

Arboretum Park Conservancy
Arborway Coalition
Arnold Arboretum
Boston Committee of the Garden Club of America
Boston Society of Landscape Architects
Brookline GreenSpace Alliance
Charlesgate Alliance
Emerald Necklace Greenway Project
The Fenway Alliance
Fenway Civic Association
Fenway CDC
Fenway Garden Society
Franklin Park Coalition
Franklin Park Zoo / Zoo New England
Friends of Jamaica Pond
Friends of Leverett Pond
Friends of the Muddy River
Isabella Stewart Gardner Museum
Jamaica Hills Association
Jamaica Pond Association
MASCO
Museum of Fine Arts, Boston

2019 PARTY IN THE PARK COMMITTEE CHAIRS

Catherine Creighton
Danielle Frissell
Kathleen McIntyre
Holly Safford
Catheline van den Branden

2019 DOCENTS

Susan Helms Daley
Karen D'Amato
Don Eunson
Stan Everett
Dianne Gorman
Jeanie Knox, *Docent Coordinator*
Michael Leidig
Judy MacNeill
Dan Moulton
Lucy Robb
Rachel Strauss
Nancy Stutzman
Betsy Tarlin

STAFF

Ellen Arnstein
Evan Bradley
Julia Damiano
Mary Hickie
Victoria Liang
Kent Jackson
Stephen Lin
Karen Mauney-Brodek
Jamie Santuccio
John B. Smith
Briana Thomas
Veronika Trufanova



THANK YOU TO OUR SUPPORTERS!

Our deepest thanks to the individuals, foundations, corporations, and government and institutional partners who contributed so generously to help us achieve our mission to maintain, restore and protect the parks of the Emerald Necklace.



\$50,000+

Estate of David Dodge^E
Plimpton Shattuck Fund^{E, L}
Kate and Ben Taylor^{E, L}
Anonymous

\$25,000-\$49,999

Brooke C. and John R. Cook^{E, L, A}
Florrie Everett^{E, L}
Sarah Freeman^{E, L}
Marjorie and Nicholas Greville^{E, L}
Barbara and Amos Hostetter^{E, L}

\$10,000-\$24,999

Amy and David Abrams^L
Joshua and Anita Bekenstein^E
Amy Bernstein^E
Lisa A. and Thomas W. Blumenthal^{E, L}
Mardee Brown and Jeffrey Libert^L
Ellie Cornish Chu and Brian Chu^{E, L}
James K. and Stephanie W. Cornell^{E, L}
Victoria and David Croll^L
Lynn Dale and Frank Wisneski^{E, L}
Uzochi Erlingsson^L
Courtney and Michael Forrester^{E, L, A}
Cassandra H. Henderson^L
Beth S. and Seth Klarman^L
Pamela Kohlberg and Curtis Greer^E
Luciano Lauretti and Jane Roy^L
Sherry and Alan Leventhal^L
The Caroline Loughlin Fund^E
Nancy Place^L
Lia and William Poorvu^L
Ann Beha and Robert A. Radloff^{E, L}
Cynthia L. and John S. Reed^E
Louise C. Riemer^{E, L}
Holly Safford and Charles Weillbrenner^{E, L}
Caterina Papoulias Sakellaris and George Sakellaris^L
Camille Valentine^{E, L}

\$5,000-\$9,999

Alli and Bill Achtmeyer^L
Janet Atkins and Tarleton Watkins II^L
Amy Auerbach and Leo F. Swift^{E, L}
Ashley K. Bernon^L
Isabelle and Scott Black^L
Kristin Burkhart^L
Tracy Campion^L
Ashley Clark^L
Steven Conine and Alexi Grenadier Conine^L
RoAnn Costin^L
Catherine Creighton^L
Paul and Christine Cusick^{E, L}
Jean Egan^L
Joanna Humphrey Flynn and Bryan Flynn^L
Danielle Frissell and Adam Slutsky^{E, L}
Julie Hume Gordon and Philip Gordon^{E, L}
Lisa Griffel-Perroncello^{E, L}
Rayna L. Hannaway^L
Serena W. Hatch^E
Elizabeth L. Johnson^{E, L}
Diane G. Johnston^L
William and Sinesia Karol^L
Michelle Knight^{E, L}
Christine Kondoleon and Frederic Wittmann^L
Lois R. Kunian and Stephen Kunian^{E, L}
Lianne G. Leventhal and Alexander Leventhal^{E, L}
Joyce Linde^E
Marsha and Mark MacLean^L
Carole E. Mathieson and John Iappini^{E, L}
Kathleen Taradash McIntyre and Duncan McIntyre^L
Barbara Millen and Family^{E, L}
Antoinette Russell and Louis Bailey^{E, L}
Rosmarie Scully^L
Lee Sprague^L
Lisa Taffe^L

Michael and Adela Tarshi^L
Sarita Uribe-Hall and Martin Hall^{E, L}
Catheline van den Branden^L
Molly Weeks^L
Regina J. Winslow^L
Anonymous

\$2,500-\$4,999

Nile and Lee Albright^E
Richard Baiano and Craig Tevolitz^L
Laura E. Baldini^{E, L}
Caroline Balz^L
Marygrace and Peter Barber^E
Willia Bodman^E
Emily Burns^L
Lawrence C. Caldwell^E
Lydia Cottrell^L
Stephanie Coughlan^L
Lynn B. and Bruce Dayton^E
Laura DeBonis and Scott Nathan^L
Jane C. Deery^L
Brenda S. Diana^L
Michael and Kitty Dukakis^{E, L}
Edward and Grace Fey^{E, L}
Joyce and William C. Fletcher^E
Joan and Alfred Goldberg^E
Corinne Basler Grousbeck^L
John and Ann Hall^L
Julie and Bayard Henry^E
Michael Hill and Susan Baer^E
Jeannette Hsu-McSweeney and Todd McSweeney^L
Elizabeth B. and Edward C. Johnson^E
Barbara Jordan and Bob Pemberton^{E, L}
Sabra Katz^L
Anne Lydon^L
Elena Matlack^L
Arlene and Hugh Mattison^{E, L}
Lee Moreau and Ana Miljacki^{E, L}
Brigitte and Gerard Moufflet^L
David Mugar^L

Elizabeth and Robert Owens^E
Beth K. Pfeiffer^E
Anne Serrell^{E, L}
Fran Slutsky^L
Marilyn Smith and Charles Freifeld^{E, L}
Elizabeth L. Sterner^{E, L}
David Taylor^{E, L}
Kate Velásquez-Heller^E
Amy Weed^L
Rita and Adam Weiner^L
Kate and Carroll M. Williamson^E
Anonymous

\$1,000-\$2,499

Nancy Adams^E
Mary and James Adelstein^E
Randall Albright and Heyward Parker James^E
Jennifer V. Hanks Allaire^L
Patricia and Jon Baker^E
Matthew Bane^L
Laura Barletta^L
Catherine Bassick^L
Aaron and Jenna Bates^L
Alan Belzer and Susan P. Martin^E
Fiona and James Benenson^L
Margery Bennett^L
Camilla Russell Bennett and George B. Bennett^E
Katie Schuller Bleakie and J. Maxwell Bleakie^{E, L}
Susan and Paisley Boney^{E, L}
Nancy S. and Richard Brickley^E
Shauna Brook^L
Marcia and Robin Brown^L
Nonnie Burnes^L
Helen Burnham^{E, L}
Astrid P. Burns^L
Kelly Callahan^L
Betul G. Cam^L
Judith and George Carmany^L

Christine Carona and Joe Malarney^L
 Jay and Christy Cashman^E
 Paul Chevalier^L
 Nick and Olivia Collins^{E, L}
 Amy Collins^L
 Cecily and John M. Cornish^E
 Steve Crosby and Helen Strieder^E
 Cynthia Curme^L
 Susan Helms Daley and Sean Daley^E
 Carol Deane^{E, L}
 Jennifer DeSisto^L
 Chris DeSisto^{E, L}
 Daniel Donahue^L
 Robert Evelyn Doran^E
 Lisa A. Dynner^L
 James L. Ferman, Jr.^E
 Karen and David Firestone^{E, L}
 Atsuko and Lawrence Fish^E
 Alexandra Fuchs^L
 Frederic Gardner and Sherley Smith^E
 Barbara and Robert R. Glauber^E
 Hannelore and Jeremy Grantham^E
 Sarah and Josh Greenhill^L
 Jamie and Ashley Harmon^L
 Nicole Parent Haughey^L
 Christine Hayward^L
 Ashley Hirsh^L
 Deb and Thomas Hoffman^L
 Jill A. Hornor and Yo-Yo Ma^L
 Susan and James Hunnewell^E
 Elisabeth W. Ireland and George R. Ireland^L
 Stephen and Kimberlea Jeffries^L
 Mary Johnson^L
 Carol Ann and Edwin M. Kania^L
 Alexandra Kavadas^L
 Brent Keltner^A
 Matthew J. Kiefer and Nan Porter^E
 Susan Knight and Jep Streit^E
 Sofia Lingos-Papaliadis and George Papaliadis^L
 Karen Maloney^E
 Karen Mauney-Brodek^{E, L}
 Tish and Stephen Mead^E
 Judith and Robert Melzer^L
 Ann Merrifield and Wayne Davis^L

Pamela Messenger^{E, L}
 Glenn Murphy and Kathryn Cochrane Murphy^{E, L}
 Sally McGuire Muspratt^E
 Dawn Oates^L
 Megan O'Block^E
 Jeryl Oristaglio^L
 Sofia Ostrer^L
 Minou Palandjian^L
 Jennifer and Thomas Peterson^L
 Mark and Juliana Phillips^L
 Ellen Plapinger^L
 Susan and J. William Poduska^L
 Sylvia Pope^L
 Andrea Porres^L
 Ellen Remmer and Christopher Fox^{E, O}
 Lucy and Richard Robb^E
 Ailene M. Robinson and Thomas E. Lewis^{E, L}
 Diana Rowan Rockefeller^L
 Patricia Roth^E
 Marie Louise and David Scudder^E
 Kristin and Roger Servison^L
 Robert N. Shapiro^{E, L}
 Daniel Slavin^E
 Gilda Slifka^L
 Susan Sloan and Arthur D. Clarke^L
 Ellen Smolka and Thomas Wolf^E
 Lauren Soriano^L
 Lionel B. and Vivian Spiro^L
 Melissa Steffi^L
 Esmeralda Swartz^L
 Kerry Swords^L
 Amalia Tagaris^L
 Joan and Nicholas Thorndike^{E, L}
 Krista Toms^L
 Linda E. Turner^{E, L}
 Rose-Marie van Otterloo^L
 Robert and Amy Weinberg^E
 Michelle Wellington^L
 Kristin and Tobias Welo^L
 Susan and William White^E
 Janet Wu^L
 Anonymous (2)

\$500-\$999

Irina Aguirre^L
 Ghita Akkar^L
 Barbara Alavi^L
 Charles Albright^E
 Christine Altieri^L
 Lisa and Joel B. Alvord^E
 Stephanie Andrews and Marc A. White^L
 Catherine S. Austin^{E, L}
 Anne Shattuck Bailey^L
 Jane D. and Kenneth M. Barna^E
 Gabrielle Guagliano Baron^L
 Ingrid Beattie^L
 David Beck and Gregory van Boven^E
 Ken Berk^E
 Naomi and Edward Berk^E
 Susan Black^L
 Elizabeth Brookhiser and Timothy Porter^L
 Deborah and David Brooks^E
 Ethan Brosnan^L
 Patricia and Lalor Burdick^E
 Hillary Burr^L
 Ann Buxbaum^E
 Blake Byrne^E
 Rebecca Campbell^L
 Camille and David Carlstrom^L
 Daniela Carusi^E
 Yolanda Cellucci^L
 Jaclyn Childs^L
 Gabrielle Clemens^L
 Lauren Cofiño^L
 John and Anne Connolly^E
 Julianna Connolly and Brian McDonnell^L
 Peter and Susan Covo^L
 Diddy and John Cullinane^L
 John V. Cunney and Jared Wollaston^E
 Liz Dages^L
 Nikki Dalrymple^L
 Janet DeBevoise^L
 Leilah DelPapa^L
 Barbara Delutis^L
 Emily Derr^L
 Douglas and Susan Donahue^L
 Dan Donahue^L

Michael Dosmann^L
 Polly Drinkwater^L
 Myriam Efstathiou^L
 Tracy Egan^L
 Kate Enroth^L
 Elizabeth S. Eustis^E
 Ian W. Evans^E
 Halia Evans^L
 Karen and Louis Falcone^L
 Rene Feuerman^L
 Margot and John Finley^E
 Anne Fitzpatrick^L
 Mary Folliard^L
 Kimberly A. and Clinton Furnal^L
 Tracey Gabriel^L
 Jennifer A. and Sean Gavin^E
 Janet Gelbart^E
 Joseph Geller and Maria Benet^E
 Veronica Geroukos^L
 Carol Gladstone^E
 Helen Glaenger^L
 Susan B. Grandis^L
 Heather Gregg^L
 Christian Halby and Susan Schaefer^E
 Margery Hamlen and Joseph Hammer^L
 David Handy^L
 I. Trotter Hardy and Caroline G. Hardy^E
 Alexandra Hastings^L
 Elizabeth and Whitney Hatch^E
 Trevania and John Henderson^L
 Theresa and Charles C. Hewitt^{E, L}
 Jean Holmblad^E
 Polly Hoppin and Bob Thomas^E
 Pamela and John Humphrey^L
 Diana Humphrey^E
 Joshua Janson^L
 Sarah and Zachary Jarvis^E
 Martha and Kenneth Johnston^L
 Holly and Bruce Johnstone^E
 Karen and Eric Jostrom^L
 Molly Judge^L
 Lisanne Kandiah^L
 Wesley Karger^L
 Hilary Keates^L
 Wanita and Bill Kennedy^E
 Elizabeth Kezirian^L

Donor list reflects donations
 from October 1, 2018 -
 September 30, 2019.

^E Emerald Fund Donor
 (formerly Annual Fund)

^L Liff Fund Donor

^O Olmsted Tree Society Donor
 A 20th Anniversary Donor

*We have done our best to
 accurately list our donors.
 Please accept our sincere
 apologies for any errors or
 omissions and contact the
 office to help us correct our
 records. Thank you.*





Jennifer Kinsman^L
 Hedie Klapenski^L
 Susan Kohn^{E, L}
 Lynne Kortenhaus^L
 Connie and Peter Lacaillade^L
 Carol Langer^E
 Kathleen Larisa^E
 Britt and Bernard T. Lee^L
 Lucinda and David S. Lee^E
 Irene Levangie^L
 Stephen Liff^E
 Adrienne Penta and Dan Lissner^L
 Trent Lloyd^L
 Betsy Ridge Madsen^{E, L}
 Michelle Marino^E
 Sandra Ourusoff Massey and Holt M. Massey^L
 Hope C. and William S. McDermott^L
 Joseph McNay^L
 Elizabeth Meyer^L
 Mary-Kay Miller^L
 Sally and John A. Miller^{E, L}
 Alexis Montemaggiore^L
 Susan and Stephen Moorhead^E
 Sandra Moose^L
 Gina Morda^L
 Biz Morris^L
 Frances and Monroe Moseley^E
 Barbara Moss and Timothy Haydock^E
 John J. Moynihan and Deborah Norton^E
 Karen Nanji^L
 Giselle Nelson^L
 Jessica Gifford Nigrelli^L
 Diana S. Olney^L
 Carolyn Osteen^L
 Patricia Ostrander^L
 Mary Papastavros^E
 Nirva Patel^L
 Katharine and Anthony Pell^L
 Michelle Cruz Peverly^L
 Margaret and Gene Pokorny^E
 Helen and William Pounds^L
 Patricia Pratt^L
 Robert and Evelyn Pyle^E
 Josette Ramirez^L
 Margaret Reiser and Charles Cooney^E

Michael Reiskind^L
 Wilson and Elizabeth Rickerson^E
 Elizabeth Barlow Rogers^E
 Miguel Rosales and John Corey^E
 Anna Rossi^L
 Karen Rotenberg^L
 Maria and E. Davis Rowley, Jr.^{E, L}
 Kate Saltonstall^L
 Lucy Santos^L
 Ken and Ruth Scheer^L
 Roberta K. Schnoor^E
 David Schroeder^L
 Joanna Scott^L
 Arghavan Shahidi^L
 Isabel C. and George H. Shattuck^L
 Elizabeth Shelburne^L
 Jennifer Skoler^L
 Gilda Smart and Chris Picotte^L
 David and Mary Smoyer^E
 Steve and Carol Spinelli^E
 Judy and William H. Taft^{E, L}
 Margaret Talcott and Scott Scharer^E
 Suzanne S. Taylor^L
 Sidney Topol^E
 John Vasconoellos and Bill Barr^E
 Fredericka Veikley and Edward J. Burke^E
 Renata von Tscharnier^E
 Daniel and Linda Waintrup^L
 Esperanza Watkins^L
 Stephen and Roberta Weiner^L
 Suzanne Wenz^L
 Frances and Patrick Wilmerding^L
 Peter Wilson and Jean Tempel^E
 Sarah Wilsterman^E
 Sarah Wolfgang^L
 Sara Wragge^E
 Candace Young^E
 Kristie Zaccagnino^L
 Anonymous (3)

\$100-\$499

Katherine F. Abbott^E
 Sophia Adamia^E
 Guillaem Aertsen, IV^E
 Sarah and Tim Allen^E

David W. Allen^E
 Margarita Altamirano^L
 Kathleen and Charles Ames^E
 Phyllis Andersen^E
 Lorrie R. Anderson and Conant Brewer^E
 Lucille Aptekar^E
 Diane Arute^L
 Susan Ashbrook and Fritz Casselman^E
 Brian Bacica, Jr.^L
 Raymond Bahr^E
 Aasma Baker^L
 Cynthia Barakatt^E
 Noelle Barbosa^L
 Margaret Barrett^E
 Carolyn Becker^E
 Jill and Erik Berg^E
 McKey Berkman^L
 Jane Bernstein^E
 Kathie and Mel Bernstein^E
 Anita Berrizbeitia and Luis D. Berrizbeitia^E
 Lisa Bevilaqua^E
 Elizabeth and Michael Bierer^E
 Dianna Biliouris-Reza^L
 John Bitner, Jr.^E
 Carol Blair^{E, O}
 Eleanor Bleakie^L
 Katharine Boden^L
 Eugene R. Bolinger^E
 Luisa Almeida Borges^L
 Anne Bowen^L
 Karen Brace^E
 Julie Brandlen^E
 Beth Bratton^L
 William and Nan Braucher^E
 Catherine V. Brigham^L
 Ted Brodek^E
 Peter Brooke^E
 Julianna Bruce^E
 Holly Bruce^L
 Lauren Budding^L
 Judith and Tom Bullitt^E
 Margaret Burchenal^E
 Frank Burkard^E
 Kathleen Burke^E
 Holly Burnes^E

Katie and Paul Buttenwieser^E
 Dorothy and Blake Cady^E
 David Campbell^E
 Joan Campbell^L
 Tad and Peggy Campion^E
 Carol and Frank Caro^E
 Ethan Carr^E
 Constance Cervone and Janet Deegen^{E, L}
 Alexandra Vania Chabrerie^L
 Kathlee Chardavoyne^E
 Julie Chicos^L
 James Clark^E
 Thomas Clasby and Deborah Rivers^E
 Jeff Coburn^E
 Roberta Cohn^L
 Frances H. Colburn^E
 Laura Coleman^L
 Deborah Collins^L
 Suzanne Comtois^E
 Michael and Joan Contompasis^E
 Ransom Cook^L
 Ken Cooperman^E
 Erica Corsano^L
 Anne Cowie^{E, O}
 Amy Cuddy^L
 Stephen Curwood^E
 Walter F. Cygan, Jr.^E
 Linda Davis^L
 Chase Davis^L
 Zack DeClerck^E
 Charles Deknatel^E
 Odile Destanaves^L
 John DeVillars and Gunnel Clarke^E
 Mary Dewart^E
 Samran Dhital^O
 Stephanie A. and Richard Dimino^E
 Nicolle Diver^L
 Jean Doherty^E
 Will and Ferriss Dohnam^L
 Julia H. Donahue^E
 Micaila Donovan^L
 David Dower^L
 Katy Down^L
 Liz Downing^L
 Sandra Driscoll^L
 Sarah and William J. Ducas^L

Elysa and Christian Dunster^L
 Robert E. Dynes and Elaine Conveney^E
 Rebecca Eaton and Steven Ashley^E
 Gayle and Michael Epp^L
 Charles W. Eppes III^L
 William E. Erdman and Helen P. Netos^E
 Don Eunson^{O, A}
 James Everett^L
 Peter G. Fallon, Jr.^E
 Nicholas Federoff^E
 Michael Ferrante^L
 Elisabeth Fine^E
 Anita Fink^L
 Kelly First^L
 Glenda and Robert Fishman^E
 Janet and James Fitzgibbons^E
 Charlotte Fleetwood^E
 Sarah and Charles L. Forbes^E
 Robert and Rebecca Forrester^E
 Rosemary Foy^L
 Douglas and Paula Foy^E
 Nicholas Francis^E
 Elmer Freeman^E
 Carolyn Fine Friedman and Jerry Friedman^E
 H. Clay Fuller^E
 Erin Chute Gallentine^E
 Gloria and Peter Gammons^E
 Louisa Garrison^E
 Erik Gehring^E
 Alexis Gescheider^L
 Katherine and Philip Getchell^E
 Lorna Gibson^E
 Jody and Thomas Gill^L
 Donald and Louesa Gillespie^L
 Karen Gilman^L
 Tanya Gilmartin^L
 Steve Glick and Julia Clarkson^E
 Rimma and Vadim Gluzman^L
 Alex Goldberg^L
 Martha Golub^L
 Evelyn Goodhue^{E, L}
 Jason Goodyear^E
 Alexander Y. Goriansky^E
 David Gormely^L

Maria Gough^E
 Elizabeth Granoff^L
 Debra Greenlaw^L
 Mary Greer^E
 Emily Griset^L
 John Growdon^E
 Melanie Guerra^L
 Amy Guidi^L
 Courtney Haig^E
 Christopher and Wendy Hale^E
 Kahlil Hamady^L
 Ingrid Hammond^L
 Eric Hansen and Mona Tohamy^E
 Ashely Hanser^L
 Marjorie J. and Mark F. Hanson^E
 Kate T. Harris^E
 Anne B. Hartnett^E
 Lisa and Mark Hastings^E
 Martha Haveles^L
 Candace Haydock^E
 Joseph Hayes^L
 Kathleen Hayes^L
 Pamela P. Helms^E
 Janice Henderson and Gerard Burke^E
 Mireille Hennessy^L
 Fred C. Hennie^E
 Sharon Hessney^E
 Mary A. Hickie and Esther A. Kohn^{E, L}
 Katherine Hope^E
 Caroline Hoppin^E
 May K. Houghton^E
 Mary Hughes^L
 Emily W. Hughey^E
 Nina and Ogden Hunnewell^E
 Clarissa and Walter Hunnewell^E
 Frederick Ilchman^E
 Beth Jakubowski^L
 Norman Janis and Patricia Herzog^E
 Ralph and Rhoda Janis^E
 Daydee Jobse^L
 Cassandra Johnson^L
 Rosemarie Johnson^L
 Sarah B. Jolliffe^L
 Barbara Joyce and Daniel J. Moulton^E
 Rosemary and Sajed Kamal^E

William and Phyllis Kantor^{E, A}
 David and Sarah Karle^E
 Judy and Robert Kasameyer^L
 Sharon D. Katz^L
 Collette Keenan^L
 Chris Keller^L
 Helen and Nicholas M. Kelley^{E, L}
 Joanna and Thomas B. Kennedy^E
 Susan E. Kirwan^L
 Edwina Klünder^L
 Jeanine J. and Jonathan W. Knox^E
 Lisa Koch and David Rohrlisch^E
 Aimee Konevich^L
 Jane and Nicholas Kourtis^E
 Jean G. Krasnow^E
 Robert Kretschmar^E
 Zoe Krislock^L
 Kenneth Kruckemeyer^E
 Marjorie Lacaille^L
 Carol Lammers^E
 Theodore C. Landsmark^E
 Judith Scott Larsen and Peik Larsen^E
 Ulrich Lau^E
 Maggie Lawler^L
 Robert Lawrence^E
 Susan Lawrence^E
 Cynthia Lawry^L
 Pamela and Nicholas Lazares^L
 Hillery Lee^L
 Henry Lee^E
 I-Min Lee^E
 Tim Leland and Julie Hatfield^E
 Bobi Lelon^L
 Mary Lenhardt^L
 David Leonard^E
 Neil Leonard^E
 Robert Levey and Ellen Goodman^E
 Brenda Lew^E
 Jordan Litke^L
 Karen Loane^E
 Joan Lovejoy^L
 Katelynne Lowensen^L
 Kate Lubin^L
 Leslie Lucchina^L
 Lucy Lynch^E

Ann O. MacDonald^L
 Jennifer Mack^A
 James Maguire and Jessica Welch^L
 Beth Mahar^E
 Sharon and Brad Malt^A
 Martine Mangion^L
 Peter Manus and Susan Schiro^A
 Virginia and Keith Marcotte^E
 Eva Markos^L
 Elizabeth Marks and Paul Taylor^E
 Helen Marston^E
 Kumi and William Martin^E
 John Martin^E
 Jennifer Martin^L
 Jodi Masdea^L
 Arthur and Joanne Massaro^E
 Margaret Ann Mauney^E
 Robert and Susan Mayer^E
 Emily McConarty^L
 Ann P. McCormick^E
 Amanda McGuire^E
 Anne McKay^E
 Otile McManus and Robert Turner^E
 Angela Menino^L
 Jen Mergel^E
 Beverly Merz^E
 Tonya Mezrich^L
 Lindsay Miller and Peter Ambler^L
 Margo Miller^E
 Christopher and Catherine Milton^E
 Jennifer Mingoelli^L
 Kyra Montagu^E
 Lynne Montesanto^L
 Felicia Montineri^E
 Branch Moody^E
 William and Maggie Moran^L
 Janet E. Morehouse^E
 Jessica Morel^L
 Natalia and V.J. Morgan^L
 Alice Morgan^E
 Ellie Crocker Morse^L
 Liane Moscato^L
 Arlene Mudge^L
 Regina Mullen^L
 Helen B. and John Munzer^E





Alice Murphy and William Bancroft^E
 Lauren Kinney Murphy^L
 Ronald Murphy^E
 Nicole Mushero^E
 Melody Nash^E
 Jennifer Nassour^L
 Beatrice and Peter Nessen^E
 Elizabeth Neville^E
 Rebecca Nickerson^E
 Julie Nijmeh^L
 Joanne Nikitas^L
 Alison Nogi^L
 Joseph Norris^L
 Mahnaz Nouri^L
 Judith M. and James M. Oates^E
 Erin O'Boyle^E
 Neidi Oliveri^L
 Dianne Olson^L
 Allison O'Neil^E
 Janna O'Neill^L
 Robert Oppenheim^E
 Jack Osgood^E
 Linda Sharp Paine and Thomas M. Paine^E
 Georgia Patton^L
 Jill Pengue^L
 Meg and Richard F. Perkins^E
 Frederick S. Perry^E
 Jean and John Peteet^E
 Tom Peters and Susan Sargent^E
 Loumona Petroff^E
 Charlotte and John Phillips^E
 Jean Pierce^E
 Margaret Plimpton^L
 John G. Porter and Lucy Axtell^E
 Janis Porter and Stephen Naber^E
 Hadley and Allie Powell^A
 Deena Powell^L
 Natasha Poylin^L
 Harold I. and Frances G. Pratt^E
 Danielle Prentiss^L
 Suzanne and Bernard H. Pucker^E
 Kathy Z. and George Putnam^E
 Wallis and Daniel Raemer^E
 Katherine Raisz^E

Ronaldo Rauseo-Ricupero^E
 Elizabeth R. and Christopher S. Reece^E
 Judith Reece and J. Brooks Reece, Jr.^E
 Nancy Reppucci^L
 Sydney S. Resendez^L
 Hanson Reynolds^E
 Nancy B. Riegel^E
 Nadine Ritchie^E
 Gerard Riveron^L
 JoAnn Robinson^L
 Caroline and James W. Rocco^L
 Alice Rogoff^L
 B. Andrew Zelermyer and Daniel L. Romanow^E
 Erica Rondeau^E
 Andrea Rosen^L
 Galen Royce-Nagel^E
 Marcia Ruotolo^E
 Tristan Rushton^L
 William and Karlen Ruth^E
 Vicky and Westcott Saltonstall^E
 Gail Sansbury^E
 Koreen A. Santos^L
 Diana Satin^E
 Edward Schantz^E
 Grant and Cynthia Schaumburg^L
 Mary Schmidt^L
 Richard and Cynthia Schneider^E
 Teresa M. Schreitmuller^E
 Anne Marie Schwartz^L
 Dan Schwarz^E
 Leanne Scott^L
 Suzie Sears^E
 Karen M. Seelig^E
 Madeline Segal and Abbott Reichliu^E
 Polly and Dennis J. Selkoe^E
 Peg and Stephen Senturia^E
 Sandra L. Shea and William Schechter^E
 Amy Shecter^L
 Elizabeth Shepherd^L
 Stephanie Sheps^L
 Michael Shinagel^E
 Greg and Maureen Shoukimas^E
 Alida Silverman^E
 Helaine A. Simmonds^E

Christine Simon^L
 Martina Slingsby^L
 Carolyn Slocum^L
 Mason Smith^L
 John B. Smith, Jr.^E
 Mark D. Smith and John O'Keefe^E
 Andy and Jody Snider^L
 Jeremy Solomon^E
 Alan and Susan Solomont^E
 Rachel Sommers^L
 Kim Stanfield^L
 Ann and Jim Stillman^E
 Walter Stine^E
 Remy Stressenger^L
 Margot Stern Strom and Terry Strom^E
 Nancy C. Stutzman^E
 Jin Suk^E
 Emily Sumner^L
 Yuri Sung^E
 Iris Tan^L
 Betsy Tarlin^{E, L}
 Michael A. Tarselli^E
 Thomas Tetrault^E
 Carolyn Thomas^E
 Ayres Thompson^L
 William and Elizabeth Thorndike^E
 Rose and David Thorne^E
 Wendy Thurmond^L
 John M. Tobin, Jr.^E
 Christina Townsend^L
 Sarah Bucknell Treco^L
 Veronika Trufanova^E
 Naomi and Robert Tuchmann^E
 Sydney Marshall Turner^L
 Jennifer Vasterling and Kevin Brailey^E
 Rosamond Vaule^E
 Anne and Jack Vernon^E
 Martha Vicinus^E
 Leslie-jon Vickory^L
 Alison Viehbacher and Christopher Viehbacher^L
 Martha and Mark Volpe^E
 Carolyn Wadsworth^L
 Celeste Walker^{E, L}
 Anne and Monte Wallace^L

Henry Warren and Nina Brown^E
 Jim Warshell and Gail Baugh^E
 Sarah Watkins^E
 Sophia Watson^L
 Penny Weeks^L
 Vicki Weiden^E
 Kathy Weinman and Cameron Kerry^E
 Leonard A. Weiss^E
 Emily Werner^L
 Jerry Wheelock^E
 Julia C. and Gerald B. Whelan^E
 Vicky Whitney^L
 Natalie W. Williams^E
 Maxim Willwerth^E
 Janet Wineman^E
 Theodore and Simone Winston^L
 Mary Wissemann^E
 Steven J. Wolf^E
 Julia Woodard^L
 Beth A. Worell and Joe F. Pryse^E
 Erik Wurster and Lydia Pace^A
 Julia T. Yang^E
 Jill O. and Kyle Zick^E
 Paul Zintl and Elizabeth P. Frost^E
 Elizabeth Zobel^E
 Anonymous (8)

Foundation, Corporate and Institutional Donors

\$50,000+

Department of Conservation and Recreation^E
 High Meadows Foundation^E
 PEAK Event Services^L

\$25,000-\$49,999

The Boston Foundation^{L, A}
 The Catered Affair^L
 Cummings Foundation^E
 Highland Street Foundation^E
 Samuels & Associates^{E, A}

Edwin S. Webster Foundation^E
Wilmington Trust, Part of the M&T Bank
Family^L

\$10,000-\$24,999

Bank of America Charitable Foundation^E
Beth Israel Deaconess Medical Center^E
Boston Planning and Development
Agency^E
Brown Advisory^L
The Charlotte Foundation^{E,L}
Elizabeth Taylor Fessenden Foundation^E
Focus Real Estate^E
Hamilton Company Charitable
Foundation^E
KBK Foundation^E
Klunder Communications^L
The John and Sonia Lingos Family
Foundation^{E,L}
Modern Luxury^L
Naples Botanical Garden^L
Northeastern University^E
Stop & Shop^E
Wagner Foundation^L
Winston Flowers^L

\$5,000-\$9,999

The Albright Foundation Trust^L
Boston Athletic Association^E
Boston Magazine^E
Boston Symphony Orchestra^L
Colleges of the Fenway^E
Jane B. Cook 1992 Charitable Trust^E
Dior Couture^L
Emerging Business Partners^L
Glamsquad, Inc.^L
JP Morgan Chase & Co^L
MASCO^{E,L}
Museum of Fine Arts, Boston^E
Red Sox Foundation^E
The Slater Foundation^L
Soigné Chapeau LLC^L

The Lawrence & Lillian Solomon
Foundation^{E,L}
SpyMom, LLC^E

\$2,500-\$4,999

Apellis Pharmaceuticals^E
Boston Harbor Hotel^L
The Edmund & Betsy Cabot Charitable
Foundation^L
Donahue Maley Burns Team^L
Bertram A. and Ronald M. Druker
Charitable Foundation^E
Enel X^E
The Folliard Family Fund^L
Four Seasons Hotel Boston^L
Goulston & Storrs^L
Isabella Stewart Gardner Museum^{E,L}
The Lenox Hotel^L
Liberty Mutual^E
Mandarin Oriental, Boston^L
Mission Hill/Fenway Neighborhood
Trust, Inc.^E
New England Aquarium^E
The Newbury Boston^L
Novartis^E
Optum, Inc.^E
REMY Creations^L
The Ritz Carlton, Boston Common^L
Ropes Wealth Advisors LLC^E
Saks Fifth Avenue^L
The Sidman Family Foundation^L
Target^E
Tufts Health Plan Foundation^E
U.S. Forest Service Eastern Region^E
Anonymous

\$1,000-\$2,499

Anchor Capital Advisors, LLC^E
Beacon Hill Garden Club^E
Bloomingdale's^L
Boston Cultural Council^E

Brigham and Women's Faulkner
Hospital^E
Citizens Bank^E
Cummings Properties, LLC^E
Douglas Elliman Real Estate^L
The Druker Company, LTD^L
El Pelón Taquería^E
Fleming Brothers., Inc.^E
The Four Seasons, One Dalton Street^L
Friends of Post Office Square^L
The Friends of the Curley House^E
The Garden Club of the Back Bay, Inc.^E
Grayson Family Foundation^E
Hall Properties, Inc.^E
Harvard Medical School^L
Knight Foundation^E
Kyle Zick Landscape Architecture^E
Lebowitz-Aberly Family Foundation^L
Lovett-Woodsum Foundation^E
Maple Hurst Builders^E
Marchioness Home & Garden^L
Massachusetts Energy Marketers
Association^L
Neiman Marcus^L
Palace Head Foundation Inc^E
Roxbury Tenants of Harvard
Association^E
Smith, Sullivan & Brown, PC^E
Tiffany & Co.^L

\$500-\$999

Boston Red Sox^E
Brookline GreenSpace Alliance, Inc^E
Congress Wealth Management^L
The Fairmont Copley Plaza^L
Falcon Investment Advisors^E
Flour Bakery + Café^E
Friends of the Muddy River^E
Land Design Associates Inc^E
Polkadog Bakery^E
The Print House^E
The Sooner Foundation^E

TD Bank^E
Walking Stick Family Fund^E
Whole Foods Market^E
Windrose Advisors^E

\$100-\$499

Alma Philanthropy, Inc^E
AmazonSmile Foundation^E
Appleton Antique Lighting^E
Arborway Coalition^E
Arnold Arboretum^E
Betsy and Alan Cohn Foundation, Inc.^E
Columbia Alumni Association of Boston
Inc.^E
Dell Mitchell Architects Inc.^L
Elsevier^E
The Fenway Alliance, Inc.^E
Fenway Garden Society^E
Ferris Wheels Bike Shop^E
Frederick Law Olmsted National
Historic Site^E
High Street Hill Association^E
Inland Underwriters Insurance Agency,
Inc.^E
Kids Love Greece^L
Kristen Rivoli Interior Design^L
MGS Group Real Estate^L
Nigro, Pettepit and Lucas, LLP^L
Noanett Garden Club^E
O'Brien & Sons^E
Perennial Gardens LLC^E
Pfizer Foundation^E
Rattle Advertising & Marketing LLC^E
Road Scholar^E
Rubblestone Foundation^E
Swan Boats, Inc.^E
UBS Investment Bank^E
Urban Land Institute^E
WorldBoston^E
Zoo New England^E



FINANCIAL SUMMARY, FISCAL YEAR 2019

Revenue

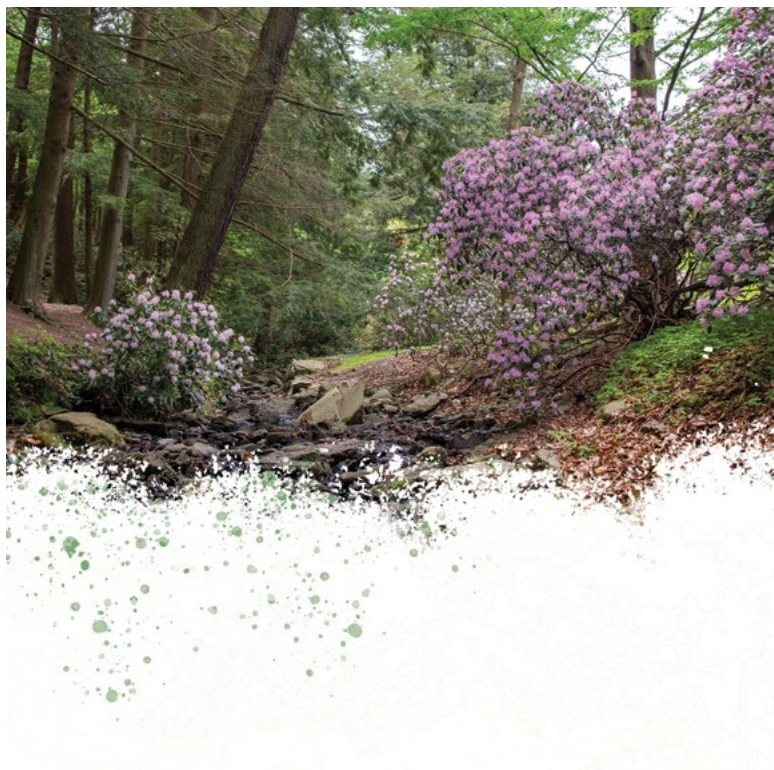
GRANTS AND CONTRIBUTIONS

Emerald Fund	1,220,772
Olmsted Tree Society	2,050
Justine Mee Liff Fund —Party in the Park*	987,215

TOTAL GRANTS AND CONTRIBUTIONS **\$2,210,037**

Investments & Other Income 79,938

TOTAL REVENUE **\$2,289,975**



Expenses

PROGRAMS / PROJECTS / EVENTS

Education & Youth Programs	184,364
Park Events and Visitor Services	369,123
Maintenance, Restoration & Volunteers	601,164
Olmsted Tree Society Tree Management Program	242,705
Justine Mee Liff Fund —Party in the Park*	476,906

TOTAL PROGRAMS / PROJECTS / EVENTS **\$1,874,262**

PROGRAM SUPPORT

Development & Administration 546,754

TOTAL PROGRAM SUPPORT **\$546,754**

TOTAL EXPENSES **\$2,421,016**

Net Assets

Fixed Assets—Shattuck Visitor Center	708,483
Operating Funds	385,329
Olmsted Tree Society	1,312,435
Shattuck Endowment	754,542
Justine Mee Liff Fund*	3,359,920

TOTAL NET ASSETS **\$6,520,709**

This is an audited financial summary for the fiscal year ending September 30, 2019. The independent auditor's report, including financial statements, is available on the Conservancy's website at emeraldnecklace.org/about-us.

**Party in the Park raises funds for the Justine Mee Liff Fund.*





EMERALD NECKLACE CONSERVANCY

Mailing Address: 350 Jamaicaaway, Boston, MA 02130

Shattuck Visitor Center: 125 The Fenway, Boston, MA 02115

emeraldnecklace.org | 617.522.2700

